

Mounting Notes: Fixture weights over 50 LBS. this requires additional mounting beyond a J-BOX

Electrical: QTY 12  
 Electrical Type: LED  
 Wattage: 21  
 Voltage: 120  
 Source Lumens: 1800  
 Down Light: N/A  
 Dimming: ELV/TRIAC  
 CCT: 3000K  
 CRI: 90  
 Mounting: Building Structure  
 Weight: 80 lbs.  
 Suspension: Cable

### Translucent Finishes

\*\*NOT AVAILABLE IN COSTAL REGIONS\*\*

Heritage Brass  
 Vintage Gold  
 Oil Rubbed Bronze  
 Satin Nickel  
 Gun Metal  
 Black Nickel

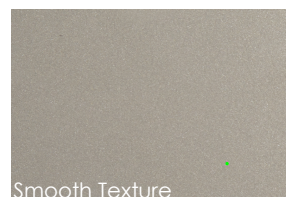


Brushed Texture

### Metallic Finishes

\*\*COSTAL OPTIONS\*\*

Gilded Brass  
 Novel Brass  
 Burnished Bronze  
 Flat Bronze  
 Classic Silver  
 Metallic Beige Silver  
 Graphite  
 Matte Black



Smooth Texture

### Glass Options

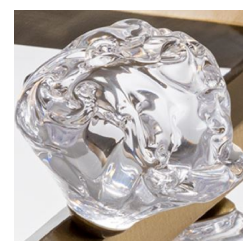
QTY 12 Pieces



Zircon  
 (Cast Glass)



Seed  
 (Hand-Formed Glass)



Floret  
 (Hand-Formed Glass)

REVISION A 5/19/22

© Copyright 2022. All rights in design, detail or invention of this drawing are reserved as the property of Hammerton. Any imitation or adaptation without written consent is strictly prohibited