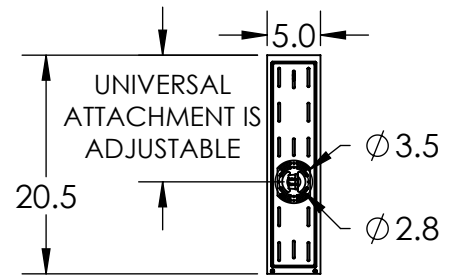


**Mounting Detail**  
MOUNTS TO J-BOX



## PRODUCT DESCRIPTION

The Cascade outdoor sconce combines a crisp linear design with eye-catching details. An intriguing artisan glass diffuser casts 3000K LED light downward through cascading rectangles of precision-cut metalwork. Aluminum construction, marine grade pre-treatment and AAMA 2604 powder coat finishes ensure long lasting beauty in all climates.

The Cascade sconce is certified as Dark Sky Compliant by the International Dark Sky Association (IDA) and includes a lifetime warranty to the original purchaser.

## PRODUCT SPECIFICATION

Construction: Aluminum Body With Cast Class

Finish Options: **AG TB SB**

Glass Options: Chilled Cast Glass

Suspension Method: Wall Mount

Weight(lbs.): 10 lbs

UL Rating: Outdoor/Wet

Top Diffuser: N/A

Bottom Diffuser: Cast Glass

Light Source: LED

Electrical Qty: 1

Wattage (Watts):8.5

Voltage (Volts): 120VAC

Source Lumens: 800

Dimming: Forward/Reverse Phase to 1%

CCT: 3000K

Driver Quantity & Location: N/A

CRI: 93+

Power Factor: >0.9

SCAN FOR MORE  
INFORMATION



### GENERAL NOTES:

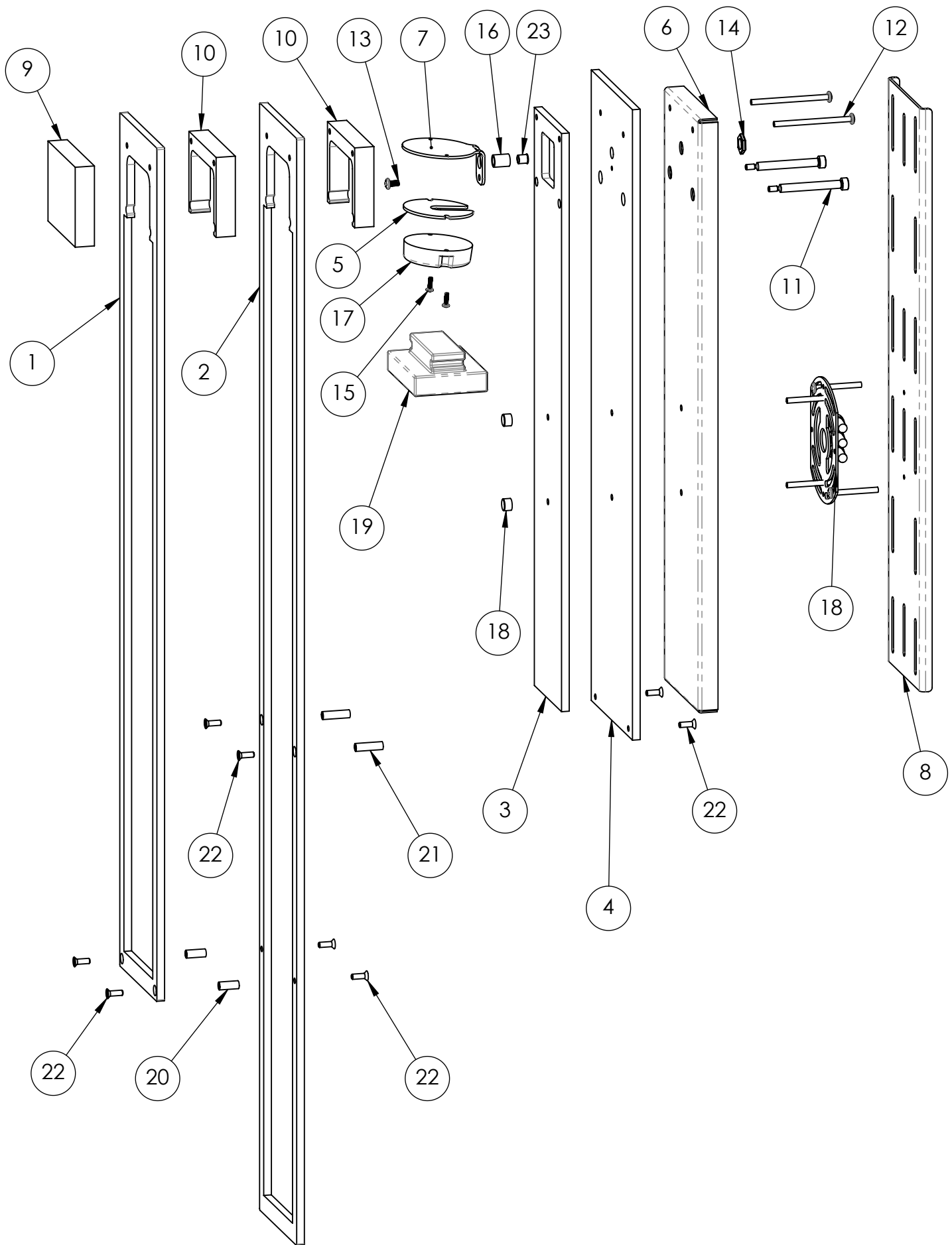
All dimensions are shown in inches unless otherwise stated.

Visit [studio.hammerton.com](http://studio.hammerton.com) to read about our Lifetime Limited Warranty.

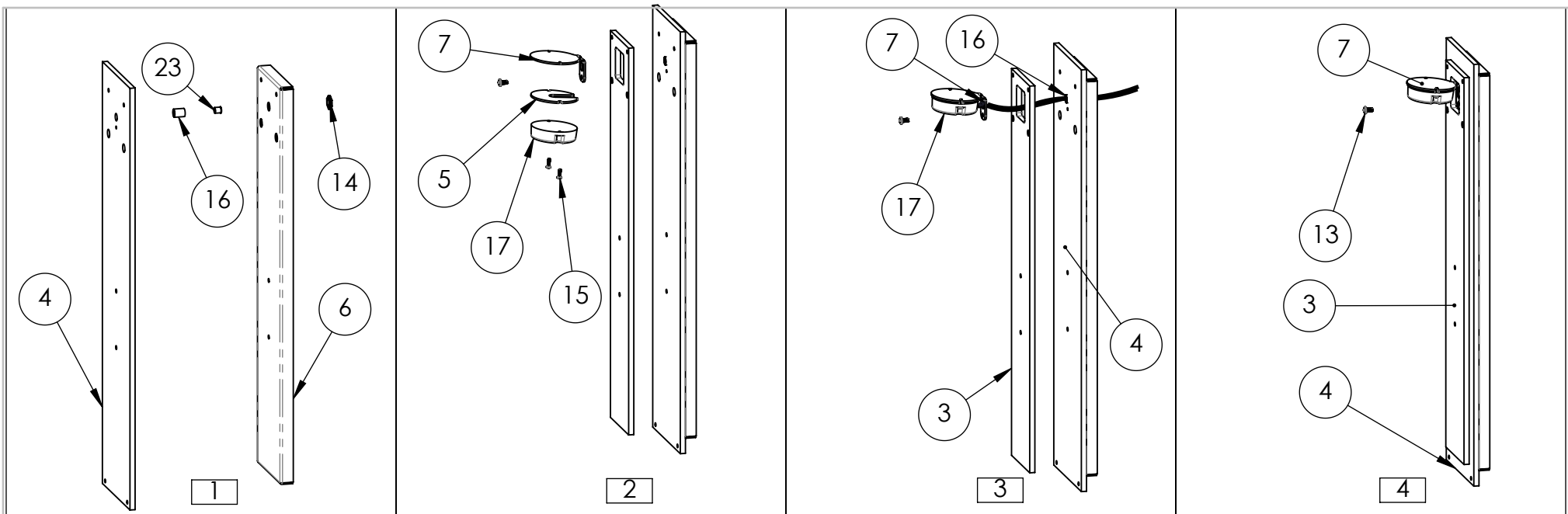
This product may use mixed materials like steel and aluminum in its construction. Transparent finishes may vary between steel and aluminum.

Hammerton products are made by artisans, not machines. A close inspection may reveal subtle variations and imperfections in glass, metal and other handcrafted materials that reflect the mark of the maker. They should be expected and celebrated.

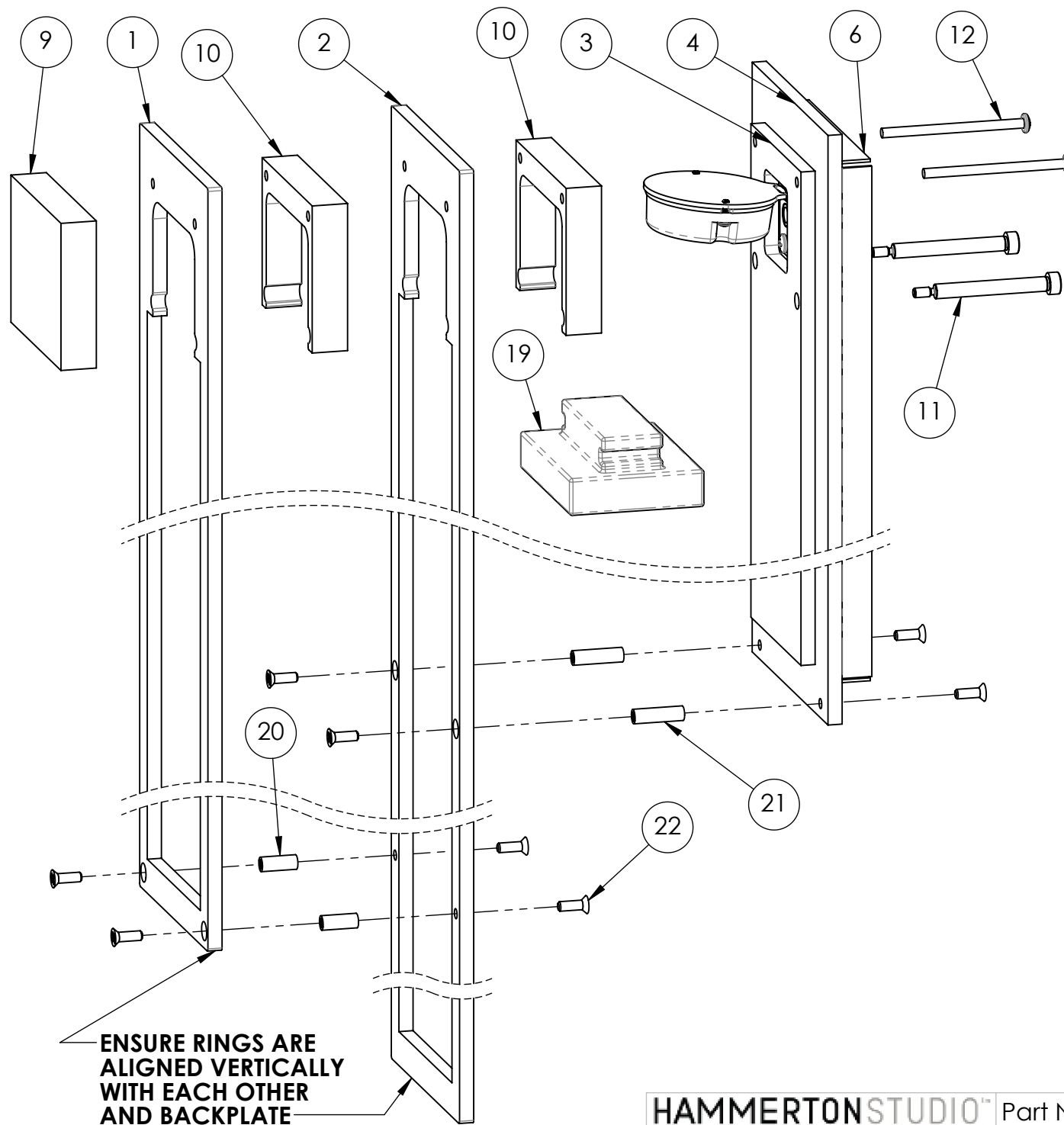
© Copyright 2023. All rights in design, detail or invention of this drawing are reserved as the property of Hammerton. Any imitation or adaptation without written consent is strictly prohibited.  
Hammerton Inc. 217 Wright Brothers Dr. Salt Lake City, UT 84116 (801)973-8095 | [studio.hammerton.com](http://studio.hammerton.com) | [info@hammerton.com](mailto:info@hammerton.com)



NO.	PART NUMBER	QTY	DESCRIPTION	STOCKED	FINISH
1	22-012-01941	1	Cascade - 27.75" Ring	BUILT	PAINT
2	22-012-01942	1	Cascade - 36" Ring	BUILT	PAINT
3	22-012-01943	1	Cascade - 18.8" Front LC Plate	BUILT	PAINT
4	22-012-01944	1	Cascade - 20.5" Middle LC Plate	BUILT	PAINT
5	22-012-01760	1	Outdoor Believe ACLED Heat Sink w/ Wire Way Slot	BUILT	
6	22-012-01945	1	Cascade - 19.3" Bent Backplate	BUILT	PAINT
7	22-012-01771	1	Mantle LED Mount	Y	
8	22-012-01946	1	19" Adjustable Mounting Plate	BUILT	
9	33-002-09114	1	Cascade Machined Front Plate	Y	PAINT
10	33-002-09115	2	Cascade Machined Spacer Ring	BUILT	PAINT
11	32-012-09020	2	8-32 x 2" L SHOULDER BOLT	Y	
12	32-012-04919	2	8-32 x 2.5" L Pan Head Screw - SS	Y	
13	32-012-04161	1	8-32 x 5/16" L Pan Head Screw	Y	
14	EL248	1	Hex nut, 1/8 IPS, 1/8" thick	Y	
15	32-012-04111	2	4-40 x .375" Long, Pan Head Phillips Machine Screw	Y	
16	EL102	1	1/2" L, 1/8IPS	Y	
17	32-010-05091	1	800 LUMEN BELIEVE LED BOARD	Y	
18	HARDWARE PACK U	1	STANDARD HARDWARE PACK LESS THAN 25LBS	Y	SEE DETAIL
19	32-002-05017	1	Cascade Clear Cast Glass	BUILT	
20	32-012-12101	2	#8-32 .25 X .625L THREADED STANDOFF, F-F, AL	Y	PAINT
21	32-012-12100	2	#8-32 .25 X .875L THREADED STANDOFF, F-F, AL	Y	PAINT
22	32-012-04062	8	8-32 x 1/2" Flat Head Phillips Screw, Zinc plated	Y	PAINT
23	32-010-04068	1	1/8 IPS pipe hole bushing	Y	



1. INSERT PLASTIC BUSHING (23) INTO IP (16) THEN THREAD IP (16) INTO MIDDLE LC PLATE (4) . SLIDE BENT BACKPLATE (6) OVER IP (16) AND SECURE WITH IP NUT (14).
  2. SANDWICH WIREWAY HEAT SINK (5) BETWEEN AC-LED (17) AND BENT LED MOUNT (7) . SECURE AC-LED (17) TO BENT LED MOUNT (7) WITH 4-40 SCREWS (15).
  3. ROUGHLY PLACE FRONT LC PLATE (3) ONTO MIDDLE PLATE (4) . PASS WIRE FROM AC-LED (17) THROUGH BENT LED MOUNT (7) , MIDDLE PLATE (3) , AND IP (16).
  4. SECURE BENT LED MOUNT (7) TO MIDDLE PLATE (4) WITH 8-32 SCREW (13).
- NOTE: FRONT PLATE (3) SHOULD NOT YET BE SECURED.



**HAMMERTONSTUDIO™**

Part Number: ODB0083-03

Rev: B

Description: CASCADE 36" SCONCE

SHEET 5 OF 6

PRODUCT REVISIONS			
REV.	DESCRIPTION	Drawn By:	Drawn Date:
A	INITIAL RELEASE	LWalker	11/13/2023
B	ADDED RENDERING	LWalker	12/7/2023

UL MANUFACTURING STICKER

**HAMMERTON**  
**ACLED-OD SERIES**  
**MAX 120 Vac, 50/60 Hz, 71 mA**  
**DRY LOCATIONS ONLY**  
**MFG DATE YEAR: 20 21 22 23 24 25**  
**MONTH: 1 2 3 4 5 6 7 8 9 10 11 12**