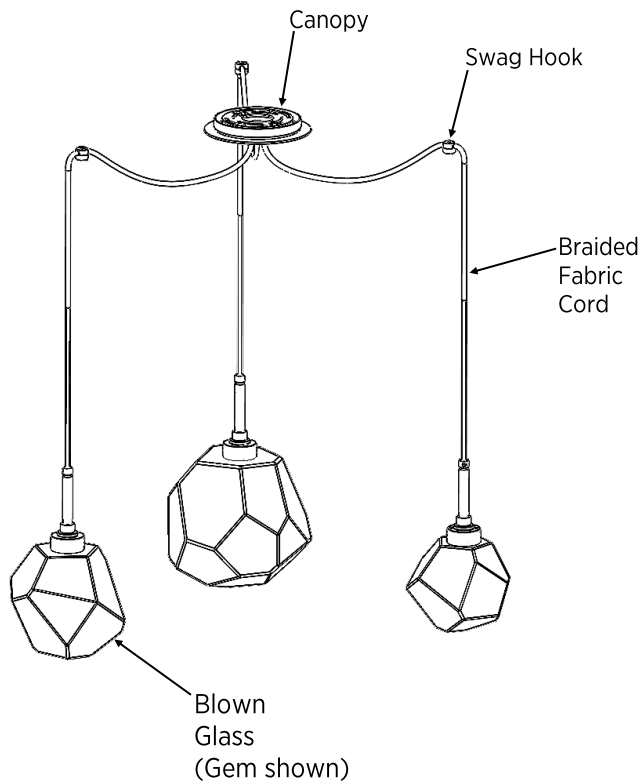


Included Components

- A. Hardware Packet Y, with Instructions
- B. Parallel Glass Panels or Blown Glass Braided Fabric Cord
- C. Cord grip (Attached to canopy)
- D. Flat Knobs

Required Tools

1. Allen Key (provided)
2. Philips screw driver (not provided)
3. Wire cutters/strippers (not provided)
4. Measuring tape (not provided)



Assembly Instructions

Step 1: Make wire connections from source power to LED driver. **WHITE** to **WHITE** and **BLACK** to **BLACK**. Secure driver in J-Box with universal following provided mounting instructions. (Leave **RED** and **BLACK** wires sticking out)

Step 2: Using the E-Z Toggle kits (see E-Z Toggle Instructions on the next page) included in the Hardware pack, install Swag Hooks radially around where the Canopy will be mounted using a measuring tape to achieve the desired distance.

Step 3: Attach each of the pendants to its respective swag hook, adjusting them to their desired height.

Step 4: Hold the canopy in the approximate location it will be installed. Run the cloth chord of each of the pendants one at a time through the canopy faceplate until it reaches the desired sag between the canopy and the swag hook and tighten the cord grip using a flat blade screw driver. The cord grip is on the Faceplate. **DO NOT OVER TIGHTEN. THIS MAY DAMAGE THE FIXTURE.**

Step 5: Cut chords to length and re-strip the ends to prepare for wire connections. Be sure to leave at least 6" of excess wire when you cut the chord to allow enough length for wire connections.

WARNING

DO NOT DIRECTLY CONNECT LEDs TO AC POWER.

LEDs will be damaged if exposed to high voltages. The LED's must be wired in series to work properly.

3 Pendant Configuration

Step 6: Make wire connections from the Pendant assemblies to the LED Driver. Each Pendant will have a **WHITE** and **BLACK** wire and the LED Driver will have a **RED** and **BLACK** wire.

- 1) Choose one of the pendant assemblies and connect the **WHITE** wire to the **RED** wire of the LED Driver using one of the provided Orange wire nuts.
- 2) Connect the **BLACK** wire of that same pendant assembly to a **WHITE** wire of one of the two remaining pendant assemblies using one of the provided Orange wire nuts.
- 3) Connect the **BLACK** wire of the second pendant assembly to the **WHITE** wire of the last remaining pendant assembly using one of the provided Orange wire nuts.
- 4) Connect the **BLACK** wire (right next to the red wire) from the LED Driver to the **BLACK** wire of the last pendant assembly using one of the provided Orange wire nuts.

6 Pendant Configuration

Step 6: Make wire connections from the Pendant assemblies to the LED Driver. Each Pendant will have a **WHITE** and **BLACK** wire and the LED Driver will have a **RED** and **BLACK** wire.

- 1) Choose two of the pendant assemblies and connect the two **WHITE** wires to the **RED** wire of the LED Driver using one of the provided Orange wire nuts.
- 2) Connect the **BLACK** wire of one of the previous pendant assemblies to a **WHITE** wire of a new pendant assembly using one of the provided Orange wire nuts.
- 3) Connect the **BLACK** wire of the new pendant assembly to a **WHITE** wire of another new pendant assembly using one of the provided Orange wire nuts.
- 4) Repeat steps 3-4 for the remaining 3 pendant assemblies
- 5) Connect the **BLACK** wire (right next to the red wire) from the LED Driver to the two **BLACK** wires of the pendant assemblies using one of the provided Orange wire nuts.

Step 7: Mount the canopy to the ceiling using the provided Mounting Instructions.

Prior to installing glass ensure all cords are properly secured through each swag hook so the glass is being supported by the swag hook and not the canopy. Solely supporting by the canopy may overload the J-Box mount resulting in damage.

Step 8: Attach glass to LED pendant housing. (See other page)

About Hammerton Studio

HAMMERTON STUDIO

When we introduced the Hammerton Studio brand in 2014, we saw an enormous opportunity to raise the bar in decorative lighting. In design, we wanted to lead rather than follow. In construction, we wanted to showcase Hammerton's renowned reverence for time-honored artisan craftsmanship and authentic materials. In performance, we wanted to provide highly reliable solutions that far exceeded industry norms for aesthetics, function, and quality. Based on the brand's dramatic growth and customer feedback, it's clear we are on the right track.

EXTRAORDINARY DESIGN VALUE IN ARTISAN GLASS & METALWORK

Hammerton began in 1995 as a blacksmith shop, but we've come a long way since then. Today we employ a world class team of metal artisans who are disciplined in a broad range of fabrication techniques and processes. We've also added in-house capabilities in blown, cast and kiln-fused glass, and today Hammerton operates one of the largest artisan glass production facilities in the U.S. With deep design and fabrication expertise at the intersection of glass and metalwork, we're laying the foundation for a new era of lighting innovation.

THE HAMMERTON HERITAGE

Our Hammerton Studio brand stands on the shoulders of more than a quarter century of experience pushing the boundaries of innovative custom lighting design. Each Hammerton Studio collection has been inspired by custom work our company has brought to life in collaboration with leading interior design professionals over the years. Built to your specifications, every fixture reflects the uncompromising design and attention to detail that is distinctly Hammerton.

A REPUTATION REFLECTED BY OUR CLIENTS

Hammerton fixtures are as extraordinary as the clients who purchase them, including Forbes 400 members, Fortune 500 leaders, award-winning entertainers, fashion and interior designers, sports legends, and leading luxury hospitality brands.

Hammerton Inc.
217 Wright Brothers Drive
Salt Lake City, UT 84116

801-973-8095 EXT: 4
www.hammerton.com

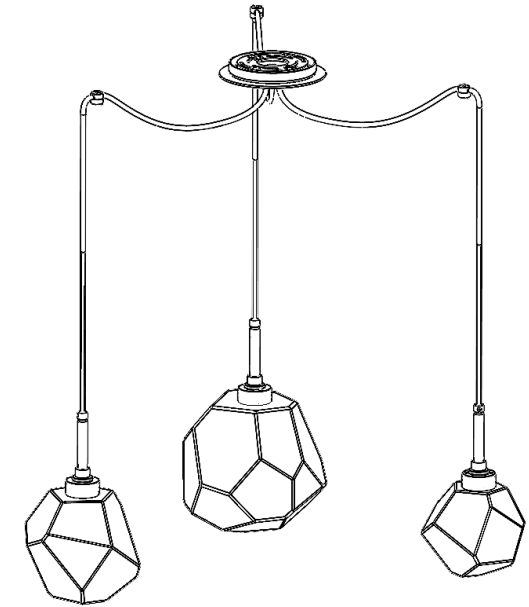
Warranty

Please visit <https://studio.hammerton.com/lifetime-limited-warranty/> to view the Hammerton Studio Warranty Policy.

HAMMERTONSTUDIO™

Assembly Instructions

SCB00XX-03, SCB00XX-06



Example: SCB0039-03
Gem 3pc Swag Multi-Pendant

**WARNING: FAILURE TO INSTALL THIS
FIXTURE PROPERLY MAY RESULT IN
SERIOUS PERSONAL INJURY OR DEATH
AND PROPERTY DAMAGE.**

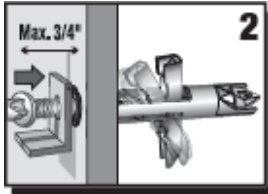
It is recommended that this product be installed by a licensed electrician who is familiar with proper LED installation and electrical loads.

41-001-00263
Rev 2

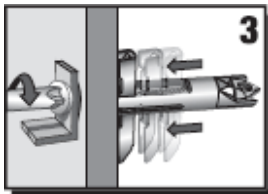
E-Z Toggle™ Instructions



Turn E-Z Toggle into drywall until seated flush. Arrows on head indicate direction toggle clamp will open. End with arrows up and down.



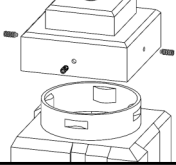
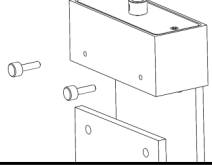
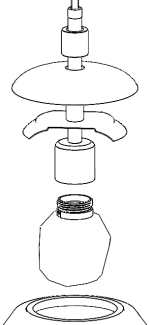

Place fixture over E-Z Toggle. Push screw into E-Z Toggle to engage clamp



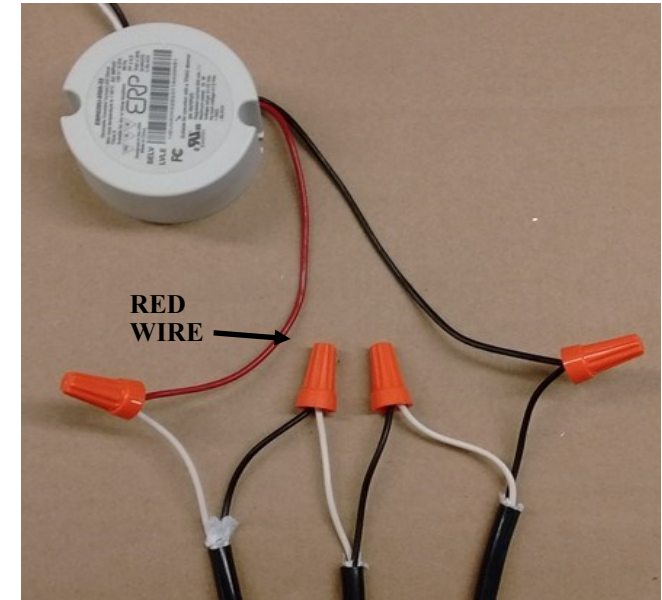
Turn screw until it stops. Toggle clamp tightens against drywall as screw is turned.

Glass Assembly

Gem, Rock Crystal, Aalto, Fiori, Blossom, Gaia, Mesa, Vessel, and Raindrop
 1- Screw glass either into or onto threaded pendant housing. (Raindrop: Place diffuser inside glass before threading)

<p>Ledgestone 1- Insert glass into housing and secure with provided set screws.</p> 	<p>Parallel Glass 1- Slide glass into housing and secure with cylinder knobs and all thread.</p> 
<p>Nebula 1- Screw inner glass into socket. 2- Un-screw retention nut and lift top cap. 3- Slide outer glass over inner glass and retention plate and rest on plate. 4- Rotate glass so that the maximum surface area is in contact with retention plate. 5- Lower top cap and tighten retention nut.</p> 	<p>Axis 1- Un-screw retention nut and lift top cap. 2- Align grooves and nylon mounts and slide glass in. 3- Lower top cap and tighten retention nut.</p>  <p>For all Glass Retention Tighten till snug DO NOT overtighten</p>

3 Pendant Configuration



6 Pendant Configuration

