



Parallel Round 11pc Multi-Pendant

The Parallel Round Multi-pendant Chandelier features floating LED-illuminated panels of glittering kiln fused & hand textured glass, each skillfully fabricated by Hammerton artisans. Sleek lines and minimal metalwork make this handcrafted glass chandelier an ideal choice for contemporary and modern interiors. Choose from several glass textures, glass colors, and finishes.

Finishes



Burnished Bronze (BB)



Beige Silver (BS)



Classic Silver (CS)



Flat Bronze (FB)



Gilded Brass (GB)



Graphite (GP)



Matte Black (MB)



Novel Brass (NB)



Gunmetal (GM)



Heritage Brass (HB)

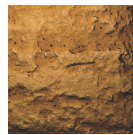


Satin Nickel (SN)

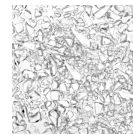


Oil Rubbed Bronze (RB)

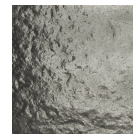
Glass Options



Bronze Granite (BG)



Clear Rimelight (CR)



Smoke Granite (SG)



Clear Granite (CG)

Product Notes - PLEASE READ:

- All Hammerton fixtures are handcrafted by artisans. Subtle imperfections reflect the mark of the maker and should be expected.
- This product may incorporate both steel and aluminum material. Transparent finishes may vary between steel and aluminum components.
- Products incorporating artisan blown and cast glass may create dramatic patterns of light and shadow on surrounding surfaces. While this is often desirable, shadowing can be minimized by adding recessed ceiling light to the installation area.

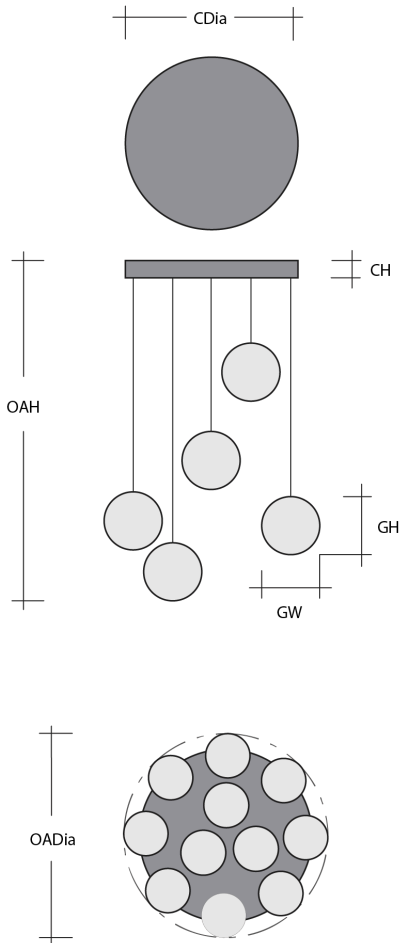
General Notes:

- Visit studio.hammerton.com to read our complete warranty.
- All dimensions are in inches unless otherwise noted. Dimensions may vary up to 7/8".

Revision date: 2026-01-12

Scan for Product & Install Info





Parallel Round 11pc Multi-Pendant

Product Dimensions *Dimensions may vary up to 7/8"*

Overall Height	OAH	19 – 135 in
Overall Diameter	OADia	31.8 in
Canopy Height	CH	1.7 in
Canopy Diameter	CDia	30 in

Glass Dimensions

Medium Qty		22
Medium Glass Height	GH	12.9 in
Medium Glass Width	GW	4.3 in

Electrical

Bulb/Lamping Qty		11
Bulb/Lamping Type		LED
Wattage		57 watts
Voltage		120 volts
Total Source Lumens		4623 lumens
Dimming Type		TRIAC/ELV
Correlated Color Temp: CCT		2700K or 3000K
Color Rendering Index: CRI		93+
Certification		ETL

Installation & Mounting

Weight: Lbs		83 lbs
Mounting Type		Structural
Suspension Type		Cloth Cord
Flat or Sloped		Sloped
Max Slope	SA	45 degrees
Slope Orientation		All
Location		Indoor/Dry

Other Information

Warranty		See Website
----------	--	-------------

Project Notes

Name:

Location:

Quantity:

Finish Color:

Glass Color:

Notes: