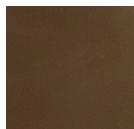


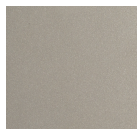
## Parallel Two-Tier Ring - 60-Inch

The Parallel Two tier Ring Chandelier features floating LED-illuminated panels of glittering kiln fused & hand textured glass, each skillfully fabricated by Hammerton artisans. Additional downlights provide plenty of task lighting. Sleek lines and minimal metalwork make this handcrafted glass chandelier an ideal choice for contemporary and modern interiors. Choose from several glass textures, glass colors, and finishes.

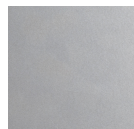
### Finishes



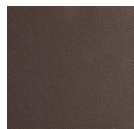
Burnished  
Bronze (BB)



Beige Silver  
(BS)



Classic  
Silver (CS)



Flat Bronze  
(FB)



Gilded Brass  
(GB)



Graphite  
(GP)



Matte Black  
(MB)



Novel Brass  
(NB)



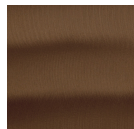
Gunmetal  
(GM)



Heritage  
Brass (HB)



Satin Nickel  
(SN)



Oil Rubbed  
Bronze (RB)

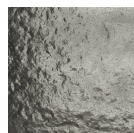
### Glass Options



Bronze  
Granite (BG)



Clear  
Rimelight  
(CR)



Smoke  
Granite (SG)



Clear  
Granite (CG)

### Product Notes - PLEASE READ:

- All Hammerton Studio fixtures are handcrafted by artisans. Subtle imperfections reflect the mark of the maker and should be expected.
- This product may incorporate both steel and aluminum material. Transparent finishes may vary between steel and aluminum components.
- Products incorporating artisan blown and cast glass may create dramatic patterns of light and shadow on surrounding surfaces. While this is often desirable, shadowing can be minimized by adding recessed ceiling light to the installation area.

[Scan for Product & Install Info](#)

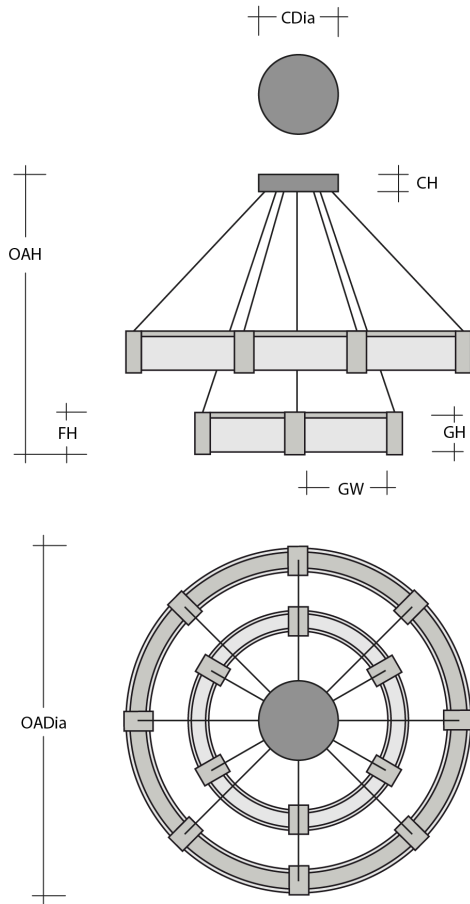


### General Notes:

- Visit [studio.hammerton.com](http://studio.hammerton.com) to read our complete warranty.
- All dimensions are in inches unless otherwise noted. Dimensions may vary up to 7/8".

Revision date: 2025-11-06

## Parallel Two-Tier Ring - 60-Inch



### Product Dimensions *Dimensions may vary up to 7/8"*

Overall Height	OAH	40.8 – 124 in
Overall Diameter	OADia	60 in
Canopy Height	CH	2.5 in
Canopy Diameter	CDia	18.5 in
Fixture Height	FH	6.5 in

### Glass Dimensions

Large Outer Glass Qty		9
Large Inner Glass Qty		9
Small Outer Glass Qty		6
Small Inner Glass Qty		6
Large Outer Glass Height	GH	6 in
Large Outer Glass Width	GW	18.3 in
Large Inner Glass Height	GH	6 in
Large Inner Glass Width	GW	17.5 in
Small Outer Glass Height	GH	6 in
Small Outer Glass Width	GW	16 in
Small Inner Glass Height	GH	6 in
Small Inner Glass Width	GW	14.8 in

### Electrical

Bulb/Lamping Qty	60
Bulb/Lamping Type	LED
Wattage	187 watts
Voltage	120 volts
Total Source Lumens	16605 lumens
Dimming Type	TRIAC/ELV
Correlated Color Temp: CCT	2700K or 3000K
Color Rendering Index: CRI	93+
Certification	ETL

### Project Notes

Name:  
 Location:  
 Quantity:  
 Finish Color:  
 Glass Color:  
 Notes:

### Installation & Mounting

Weight: Lbs	225 lbs
Mounting Type	Structural
Suspension Type	Coax/Cable
Flat or Sloped	Flat
Location	Indoor/Dry

### Other Information

Warranty	See Website
----------	-------------