

Cosmos Square 12pc Multi-Pendant

The Cosmos Square Pendant Chandelier features all three Nebula hand blown crystal glass shade styles in a standard configuration under a single canopy. Order with either an LED-illuminated cast crystal glass diffuser in a choice of three styles, or with an E26 base that takes one 40W bulb.



Finishes



Beige Silver
(BS)



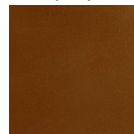
Flat Bronze
(FB)



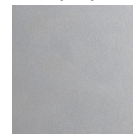
Gilded Brass
(GB)



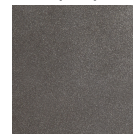
Matte Black
(MB)



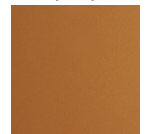
Burnished
Bronze (BB)



Classic
Silver (CS)

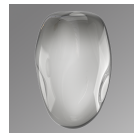


Graphite
(GP)



Novel Brass
(NB)

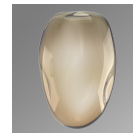
Glass Colors



Smoke
(FS,GS,ZS)



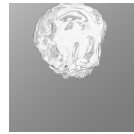
Amber
(FA,GA,ZA)



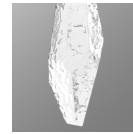
Bronze
(FB,GB,ZB)



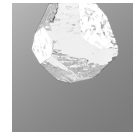
Clear
(FC,GC,ZC)



Floret
(FS,FA,FB,FC)



Geo
(GA,GB,GC,GS)



Zircon
(ZA,ZB,ZC,ZS)

Product Notes - PLEASE READ:

- All Hammerton Studio fixtures are handcrafted by artisans. Subtle imperfections reflect the mark of the maker and should be expected.
- This product may incorporate both steel and aluminum material. Transparent finishes may vary between steel and aluminum components.
- Products incorporating artisan blown and cast glass may create dramatic patterns of light and shadow on surrounding surfaces. While this is often desirable, shadowing can be minimized by adding recessed ceiling light to the installation area.

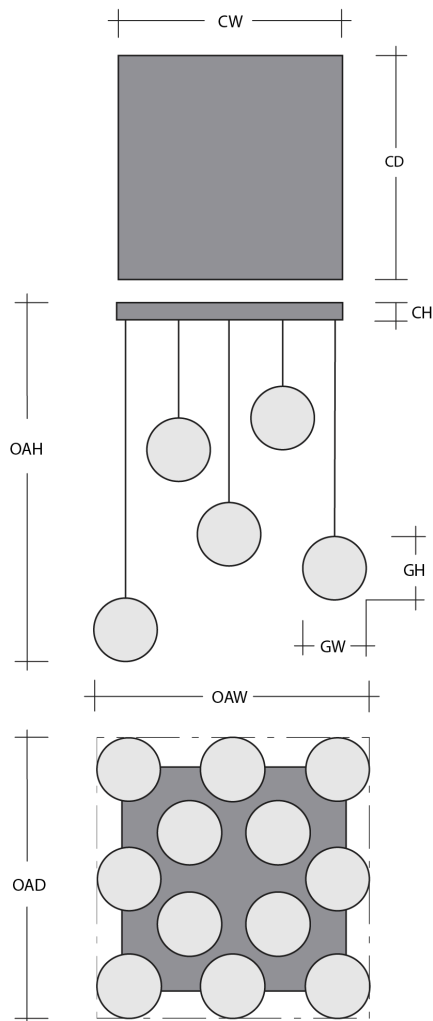
[Scan for Product & Install Info](#)



General Notes:

- Visit studio.hammerton.com to read our complete warranty.
- All dimensions are in inches unless otherwise noted. Dimensions may vary up to 7/8".

Revision date: 2025-01-21



Cosmos Square 12pc Multi-Pendant

Product Dimensions *Dimensions may vary up to 7/8"*

Overall Height	OAH	17.8 – 134.8 in
Overall Width	OAW	38 in
Overall Depth	OAD	38 in
Canopy Height	CH	1.7 in
Canopy Width	CW	30 in
Canopy Depth	CD	30 in

Glass Dimensions

Large Qty		4
Medium Qty		4
Small Qty		4
Large Glass Height	GH	9.8 in
Large Glass Width	GW	9.7 in
Medium Glass Height	GH	11.1 in
Medium Glass Width	GW	8 in
Small Glass Height	GH	7.4 in
Small Glass Width	GW	10 in

Electrical

Bulb/Lamping Qty	12
Bulb/Lamping Type	LED
Wattage	63 watts
Voltage	120 volts
Total Source Lumens	5043 lumens
Dimming Type	TRIAC/ELV
Correlated Color Temp: CCT	2700K or 3000K
Color Rendering Index: CRI	93+
Certification	ETL

Installation & Mounting

Weight: Lbs	115 lbs
Mounting Type	Structural
Suspension Type	Cloth Cord
Flat or Sloped	Sloped
Max Slope	SA 45 degrees
Slope Orientation	All
Location	Indoor/Dry

Other Information

Warranty	See Website
----------	-------------

Project Notes

Name:

Location:

Quantity:

Finish Color:

Glass Color:

Notes: