

Luna Modern Vine - 6pc

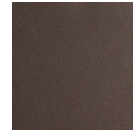
The Luna Modern Vine Chandelier elevates a familiar silhouette with a fresh modern update to the traditional round glass shade. Softly undulant orbs of handblown crystal glass enclose an LED-illuminated cast crystal glass diffuser in a choice of three styles.



Finishes



Beige Silver
(BS)



Flat Bronze
(FB)



Gilded Brass
(GB)



Matte Black
(MB)



Burnished
Bronze (BB)



Classic
Silver (CS)



Graphite
(GP)

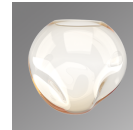


Novel Brass
(NB)

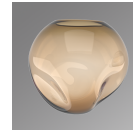
Glass Options



Smoke
(FS,GS,ZS)



Amber
(FA,GA,ZA)



Bronze
(FB,GB,ZB)



Clear
(FC,GC,ZC)



Floret
(FS,FA,FB,FC)



Geo
(GA,GB,GC,GS)



Zircon
(ZA,ZB,ZC,ZS)

Product Notes - PLEASE READ:

- All Hammerton Studio fixtures are handcrafted by artisans. Subtle imperfections reflect the mark of the maker and should be expected.
- This product may incorporate both steel and aluminum material. Transparent finishes may vary between steel and aluminum components.
- Products incorporating artisan blown and cast glass may create dramatic patterns of light and shadow on surrounding surfaces. While this is often desirable, shadowing can be minimized by adding recessed ceiling light to the installation area.

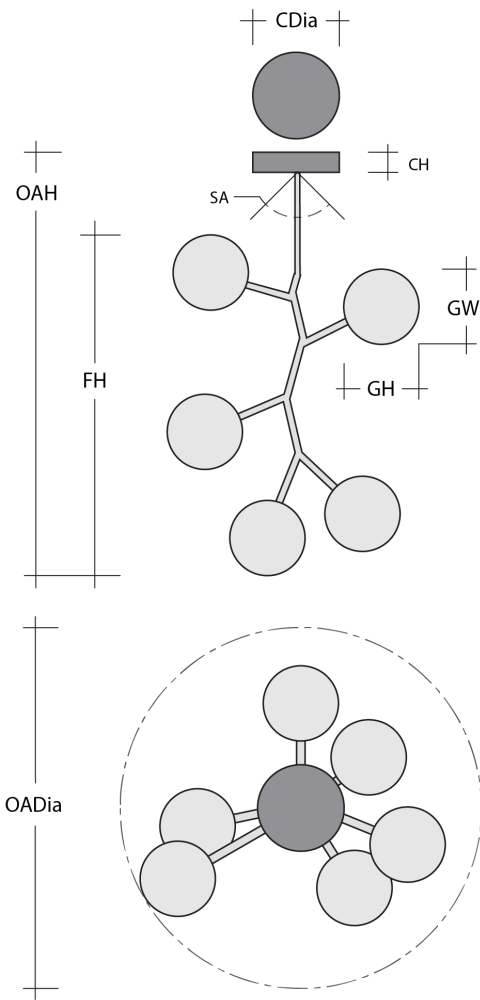
General Notes:

- Visit studio.hammerton.com to read our complete warranty.
- All dimensions are in inches unless otherwise noted. Dimensions may vary up to 7/8".

Revision date: 2025-04-03

[Scan for Product & Install Info](#)





Luna Modern Vine - 6pc

Product Dimensions *Dimensions may vary up to 7/8"*

| | | |
|------------------|---|------------|
| Overall Height | OAH | 34 – 88 in |
| Overall Diameter | OADia | 20.5 in |
| Canopy Height | CH | 0.8 in |
| Canopy Diameter | CDia | 6 in |
| Fixture Height | FH | 28 in |
| Notes | Dimensions can vary depending on installation | |

Glass Dimensions

| | | |
|-------------------|----|--------|
| Luna Qty | | 6 |
| Luna Glass Height | GH | 6.5 in |
| Luna Glass Width | GW | 7 in |

Electrical

| | | |
|----------------------------|--|----------------|
| Bulb/Lamping Qty | | 6 |
| Bulb/Lamping Type | | LED |
| Wattage | | 16 watts |
| Voltage | | 120 volts |
| Total Source Lumens | | 1399 lumens |
| Dimming Type | | TRIAC/ELV |
| Correlated Color Temp: CCT | | 2700K or 3000K |
| Color Rendering Index: CRI | | 93+ |
| Certification | | ETL |

Installation & Mounting

| | | |
|--------------------|----|-------------------|
| Weight: Lbs | | 27 lbs |
| Mounting Type | | J-Box |
| Minimum J-Box size | | 4L X 4W X 1.5D in |
| Suspension Type | | Rod |
| Flat or Sloped | | Sloped |
| Max Slope | SA | 45 degrees |
| Slope Orientation | | All |
| Location | | Indoor/Dry |

Other Information

| | | |
|----------|--|-------------|
| Warranty | | See Website |
|----------|--|-------------|

Project Notes

Name:

Location:

Quantity:

Finish Color:

Glass Color:

Notes: