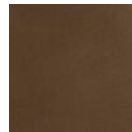




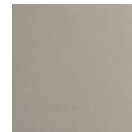
## Cirrus Square 12pc Multi-Pendant

A unique fusion of kiln-fused glass, cast crystal glass and precision-crafted metal lends surprising drama to this Cirrus square multi-pendant chandelier style. Available in a choice of Smoke Granite or Clear Granite textured glass and several finishes.

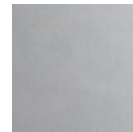
### Finishes



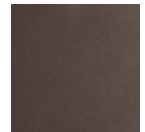
Burnished Bronze (BB)



Beige Silver (BS)



Classic Silver (CS)



Flat Bronze (FB)



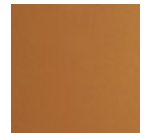
Gilded Brass (GB)



Graphite (GP)



Matte Black (MB)

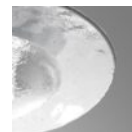


Novel Brass (NB)

### Glass Options



Smoke Granite (SG)



Clear Granite (CG)

### Product Notes - PLEASE READ:

- All Hammerton Studio fixtures are handcrafted by artisans. Subtle imperfections reflect the mark of the maker and should be expected.
- This product may incorporate both steel and aluminum material. Transparent finishes may vary between steel and aluminum components.
- Products incorporating artisan blown and cast glass may create dramatic patterns of light and shadow on surrounding surfaces. While this is often desirable, shadowing can be minimized by adding recessed ceiling light to the installation area.

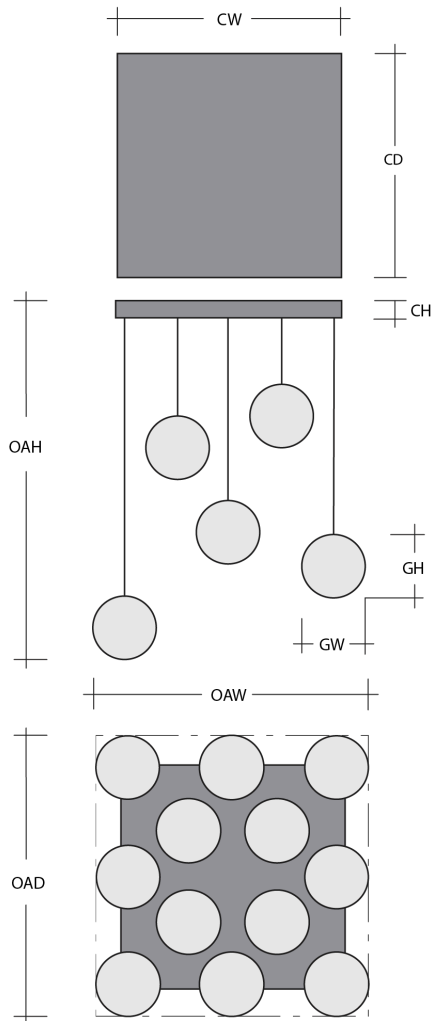
### General Notes:

- Visit [studio.hammerton.com](http://studio.hammerton.com) to read our complete warranty.
- All dimensions are in inches unless otherwise noted. Dimensions may vary up to 7/8".

Revision date: 2025-06-18

[Scan for Product & Install Info](#)





## Cirrus Square 12pc Multi-Pendant

### Product Dimensions *Dimensions may vary up to 7/8"*

Overall Height	OAH	13.5 – 120 in
Overall Width	OAW	43.5 in
Overall Depth	OAD	43.5 in
Canopy Height	CH	1.9 in
Canopy Width	CW	30 in
Canopy Depth	CD	30 in

### Glass Dimensions

Large Qty		4
Large Glass Height	GH	11 in
Large Glass Width	GW	14 in
Medium Qty		4
Medium Glass Height	GH	11 in
Medium Glass Width	GW	12 in
Small Qty		4
Small Glass Height	GH	11 in
Small Glass Width	GW	9 in

### Electrical

Bulb/Lamping Qty	12
Bulb/Lamping Type	LED
Wattage	48 watts
Voltage	120 volts
Total Source Lumens	4080 lumens
Dimming Type	TRIAC/ELV
Correlated Color Temp: CCT	3000K
Color Rendering Index: CRI	93+
Certification	ETL

### Installation & Mounting

Weight: Lbs	178 lbs
Mounting Type	Structural
Suspension Type	Cloth Cord
Flat or Sloped	Sloped
Max Slope	SA 45 degrees
Slope Orientation	All
Location	Indoor/Dry

### Other Information

Warranty	See Website
----------	-------------

### Project Notes

Name:

Location:

Quantity:

Finish Color:

Glass Color:

Notes: