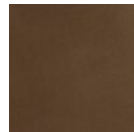


## Cumulus Square 9pc Multi-Pendant

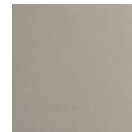
Undulating layers of precision-crafted metal and textured kiln-fused glass bring a playful sophistication to this modern square multi-pendant chandelier style. Choose an all-metal look with either a single or two-tone finish, or pair metal with a glass diffuser.



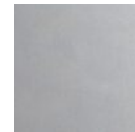
### Finishes



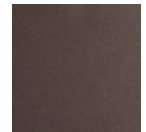
Burnished Bronze (BB)



Beige Silver (BS)



Classic Silver (CS)



Flat Bronze (FB)



Gilded Brass (GB)



Graphite (GP)



Matte Black (MB)



Novel Brass (NB)

### Accent



Smoke Granite (SG)



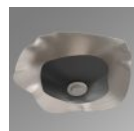
Clear Granite (CG)



Accent color matches fixture color (MI)



Salt White (WI)



Matte Black (BI)

### Product Notes - PLEASE READ:

- All Hammerton Studio fixtures are handcrafted by artisans. Subtle imperfections reflect the mark of the maker and should be expected.
- This product may incorporate both steel and aluminum material. Transparent finishes may vary between steel and aluminum components.
- Products incorporating artisan blown and cast glass may create dramatic patterns of light and shadow on surrounding surfaces. While this is often desirable, shadowing can be minimized by adding recessed ceiling light to the installation area.

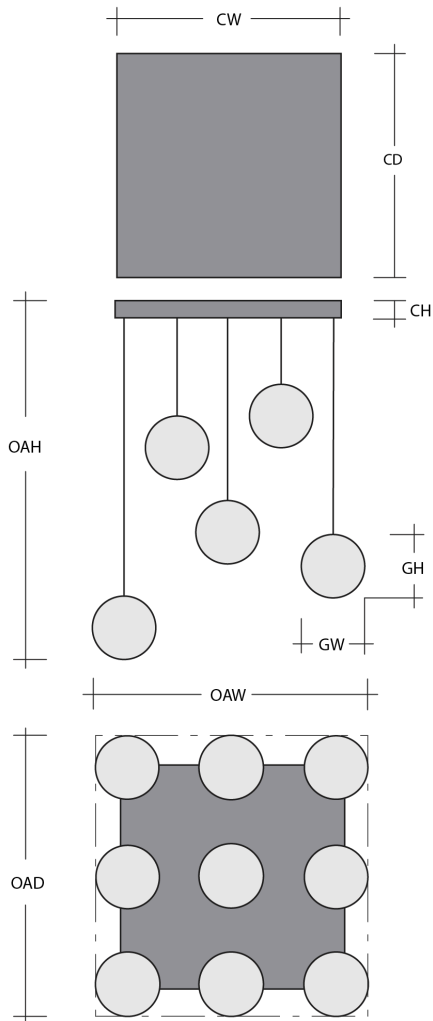
### General Notes:

- Visit [studio.hammerton.com](http://studio.hammerton.com) to read our complete warranty.
- All dimensions are in inches unless otherwise noted. Dimensions may vary up to 7/8".

Revision date: 2025-06-18

[Scan for Product & Install Info](#)





## Cumulus Square 9pc Multi-Pendant

### Product Dimensions *Dimensions may vary up to 7/8"*

Overall Height	OAH	13.5 – 120 in
Overall Width	OAW	37 in
Overall Depth	OAD	37 in
Canopy Height	CH	1.8 in
Canopy Width	CW	24 in
Canopy Depth	CD	24 in

### Glass Dimensions

Large Qty		3
Large Glass Height	GH	11 in
Large Glass Width	GW	16 in
Medium Qty		3
Medium Glass Height	GH	11 in
Medium Glass Width	GW	14 in
Small Qty		3
Small Glass Height	GH	11 in
Small Glass Width	GW	12 in

### Electrical

Bulb/Lamping Qty		9
Bulb/Lamping Type		LED
Wattage		36 watts
Voltage		120 volts
Total Source Lumens		3060 lumens
Dimming Type		TRIAC/ELV
Correlated Color Temp: CCT		3000K
Color Rendering Index: CRI		93+
Certification		ETL

### Installation & Mounting

Weight: Lbs		61 lbs
Mounting Type		Structural
Suspension Type		Cloth Cord
Flat or Sloped		Sloped
Max Slope	SA	45 degrees
Slope Orientation		All
Location		Indoor/Dry

### Other Information

Warranty		See Website
----------	--	-------------

### Project Notes

Name:

Location:

Quantity:

Finish Color:

Glass Color:

Notes: