



## Icefall - Round - 3pc Multi-Pendant

The Icefall Round Pendant Chandelier captures winter in motion, with a single hand-formed glass piece echoing the organic, ever-changing shapes of ice. Designed to highlight texture, movement, and the unexpected, it makes a statement in kitchens, vanities, and near bedsides. Its sculptural form invites the eye to wander, revealing new details from every angle.

### Finishes



Burnished Bronze (BB)



Beige Silver (BS)



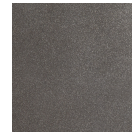
Classic Silver (CS)



Flat Bronze (FB)



Gilded Brass (GB)



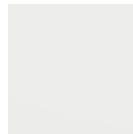
Graphite (GP)



Matte Black (MB)



Novel Brass (NB)



Salt White (WI)

### Glass Options



Clear (C)

### Product Notes - PLEASE READ:

- All Hammerton fixtures are handcrafted by artisans. Subtle imperfections reflect the mark of the maker and should be expected.
- This product may incorporate both steel and aluminum material. Transparent finishes may vary between steel and aluminum components.
- Products incorporating artisan blown and cast glass may create dramatic patterns of light and shadow on surrounding surfaces. While this is often desirable, shadowing can be minimized by adding recessed ceiling light to the installation area.

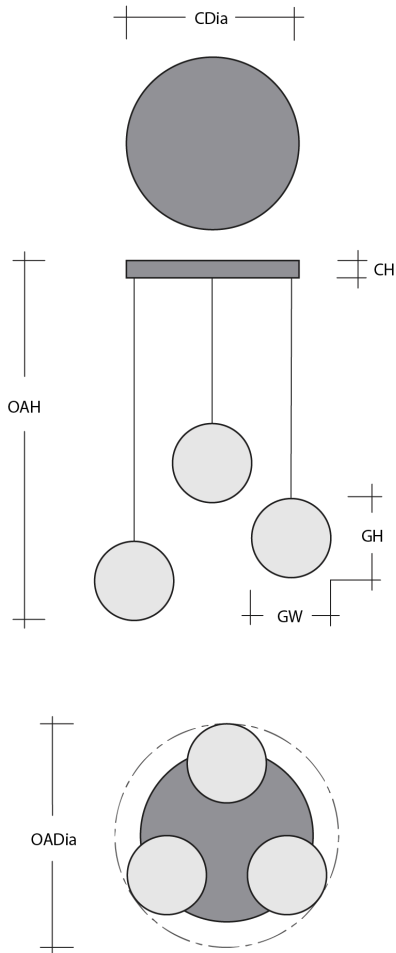
### General Notes:

- Visit [studio.hammerton.com](http://studio.hammerton.com) to read our complete warranty.
- All dimensions are in inches unless otherwise noted. Dimensions may vary up to 7/8".

Revision date: 2026-03-24

Scan for Product &  
[Install Info](#)





## Icefall - Round - 3pc Multi-Pendant

### Product Dimensions *Dimensions may vary up to 7/8"*

Overall Height	OAH	19 – 120 in
Overall Diameter	OADia	16.7 in
Canopy Height	CH	1.6 in
Canopy Diameter	CDia	16.5 in

### Glass Dimensions

Glass Qty		3
Glass Height	GH	13 in
Glass Width	GW	4 in

### Electrical

Bulb/Lamping Qty		3
Bulb/Lamping Type		LED
Wattage		16 watts
Voltage		120 volts
Total Source Lumens		1261 lumens
Dimming Type		TRIAC/ELV
Correlated Color Temp: CCT		2700K or 3000K
Color Rendering Index: CRI		93+
Certification		ETL

### Installation & Mounting

Weight: Lbs		14 lbs
Mounting Type		J-Box
Minimum J-Box size		4L X 4W X 1.5D in
Suspension Type		Cloth Cord
Flat or Sloped		Sloped
Max Slope	SA	45 degrees
Slope Orientation		All
Location		Indoor/Dry

### Other Information

Warranty		See Website
----------	--	-------------

### Project Notes

Name:

Location:

Quantity:

Finish Color:

Glass Color:

Notes: