



Gem Flush Mount - 6pc

An intriguing fusion of organic and geometric design, this versatile branch-style flush mount features six 'Gem' artisan blown glass shades with a metal canopy. Integrated LED light illuminates each glass shade without the distraction of a filament bulb. Offered in several glass colors and finishes.

Finishes



Beige Silver
(BS)



Flat Bronze
(FB)



Gilded Brass
(GB)



Matte Black
(MB)



Burnished
Bronze (BB)



Classic
Silver (CS)



Graphite
(GP)



Novel Brass
(NB)



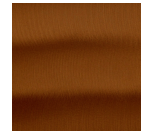
Gunmetal
(GM)



Heritage
Brass (HB)



Satin Nickel
(SN)



Oil Rubbed
Bronze (RB)

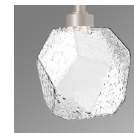
Glass Colors



Amber (A)



Bronze (B)



Clear (C)



Smoke (S)

[Scan for Product & Install Info](#)



Product Notes - PLEASE READ:

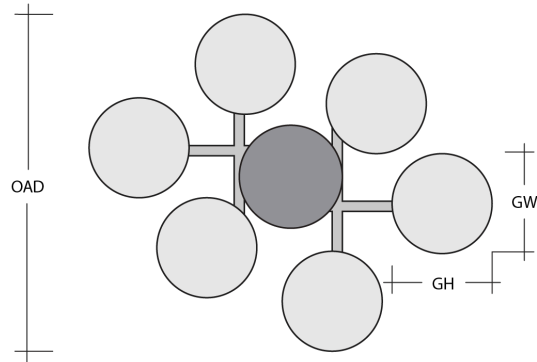
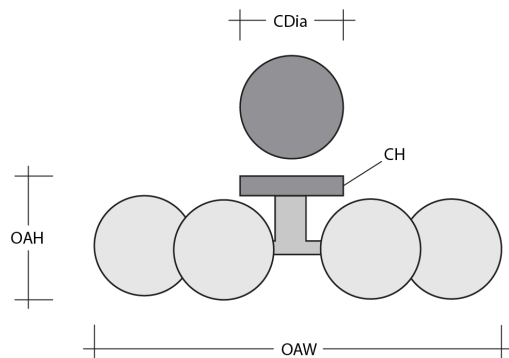
- All Hammerton Studio fixtures are handcrafted by artisans. Subtle imperfections reflect the mark of the maker and should be expected.
- This product may incorporate both steel and aluminum material. Transparent finishes may vary between steel and aluminum components.
- Products incorporating artisan blown and cast glass may create dramatic patterns of light and shadow on surrounding surfaces. While this is often desirable, shadowing can be minimized by adding recessed ceiling light to the installation area.

General Notes:

- Visit studio.hammerton.com to read our complete warranty.
- All dimensions are in inches unless otherwise noted. Dimensions may vary up to 7/8".

Revision date: 2025-01-09

Gem Flush Mount - 6pc



Product Dimensions *Dimensions may vary up to 7/8"*

Overall Height	OAH	8.9 in
Overall Width	OAW	28.1 in
Overall Depth	OAD	23.8 in
Canopy Height	CH	1.9 in
Canopy Diameter	CDia	7.5 in

Glass Dimensions

Medium Qty		6
Medium Glass Height	GH	6.8 in
Medium Glass Width	GW	6.5 in

Electrical

Bulb/Lamping Qty		6
Bulb/Lamping Type		LED
Wattage		16 watts
Voltage		120 volts
Total Source Lumens		1399 lumens
Dimming Type		TRIAC/ELV
Correlated Color Temp: CCT		2700K or 3000K
Color Rendering Index: CRI		93+
Certification		ETL

Installation & Mounting

Weight: Lbs		27 lbs
Mounting Type		J-Box
Minimum J-Box size		4L X 4W X 1.5D in
Suspension Type		Rod
Flat or Sloped		Sloped
Max Slope	SA	45 degrees
Slope Orientation		All
Location		Indoor/Dry

Other Information

Warranty		See Website
----------	--	-------------

Project Notes

Name:

Location:

Quantity:

Finish Color:

Glass Color:

Notes: