

# HAMMERTON STUDIO CLB0050-01-RTS



## Rock Crystal Flush Mount - 6pc - Ready to Ship

An intriguing ceiling solution, this versatile branch-style flush mount features six 'Rock Crystal' artisan blown glass shades with a metal canopy. Integrated LED light illuminates each glass shade without the distraction of a filament bulb. Offered in several glass colors and finishes.

### Finishes



Beige Silver  
(BS)



Flat Bronze  
(FB)



Gilded Brass  
(GB)



Matte Black  
(MB)

### Glass Colors



Amber (CA)



Bronze (CB)



Clear (CC)



Smoke (CS)

[Scan for Product & Install Info](#)



### Product Notes - PLEASE READ:

- All Hammerton Studio fixtures are handcrafted by artisans. Subtle imperfections reflect the mark of the maker and should be expected.
- This product may incorporate both steel and aluminum material. Transparent finishes may vary between steel and aluminum components.
- Products incorporating artisan blown and cast glass may create dramatic patterns of light and shadow on surrounding surfaces. While this is often desirable, shadowing can be minimized by adding recessed ceiling light to the installation area.

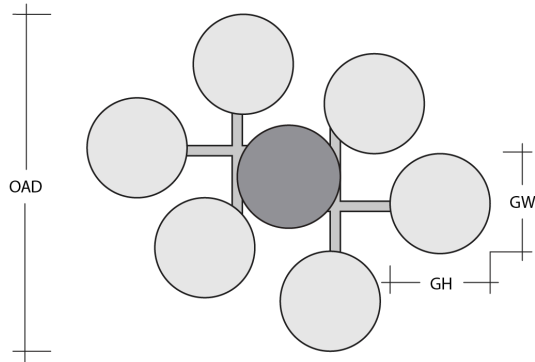
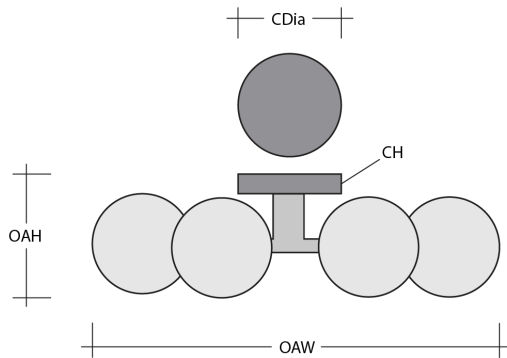
### General Notes:

- Visit [studio.hammerton.com](http://studio.hammerton.com) to read our complete warranty.
- All dimensions are in inches unless otherwise noted. Dimensions may vary up to 7/8".

Revision date: 2025-01-14

# HAMMERTON STUDIO CLB0050-01-RTS

## Rock Crystal Flush Mount - 6pc - Ready to Ship



### Product Dimensions *Dimensions may vary up to 7/8"*

Overall Height	OAH	7.5 in
Overall Width	OAW	36.4 in
Overall Depth	OAD	31.7 in
Canopy Height	CH	1.9 in
Canopy Diameter	CDia	7.5 in

### Glass Dimensions

Small Qty		6
Small Glass Height	GH	10.7 in
Small Glass Width	GW	3.9 in

### Electrical

Bulb/Lamping Qty	6
Bulb/Lamping Type	LED
Wattage	16 watts
Voltage	120 volts
Total Source Lumens	1399 lumens
Dimming Type	TRIAC/ELV
Correlated Color Temp: CCT	3000K
Color Rendering Index: CRI	93+
Certification	ETL

### Installation & Mounting

Weight: Lbs	16 lbs
Mounting Type	J-Box
Minimum J-Box size	4L X 4W X 1.5D in
Suspension Type	Rod
Flat or Sloped	Sloped
Max Slope	SA 45 degrees
Slope Orientation	All
Location	Indoor/Dry

### Other Information

Warranty	See Website
----------	-------------

### Project Notes

Name:

Location:

Quantity:

Finish Color:

Glass Color:

Notes: