



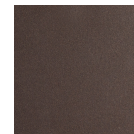
## Mesa Flush Mount - 6pc

Beautifully striated diffusers in LED-illuminated and artisan blown crystal glass evoke the rugged beauty of iconic Southwest landscapes in the Mesa flush mount light. Each is handcrafted by Hammerton artisans from up to five pounds of molten glass and is illuminated with 93 CRI integrated LED.

### Finishes



Beige Silver  
(BS)



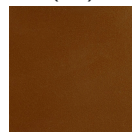
Flat Bronze  
(FB)



Gilded Brass  
(GB)



Matte Black  
(MB)



Burnished  
Bronze (BB)



Classic  
Silver (CS)



Graphite  
(GP)

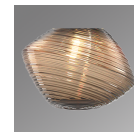


Novel Brass  
(NB)

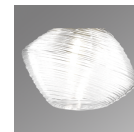
### Glass Colors



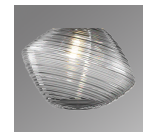
Amber (A)



Bronze (B)



Clear (C)



Smoke (S)

[Scan for Product & Install Info](#)



### Product Notes - PLEASE READ:

- All Hammerton Studio fixtures are handcrafted by artisans. Subtle imperfections reflect the mark of the maker and should be expected.
- This product may incorporate both steel and aluminum material. Transparent finishes may vary between steel and aluminum components.
- Products incorporating artisan blown and cast glass may create dramatic patterns of light and shadow on surrounding surfaces. While this is often desirable, shadowing can be minimized by adding recessed ceiling light to the installation area.

### General Notes:

- Visit [studio.hammerton.com](https://studio.hammerton.com) to read our complete warranty.
- All dimensions are in inches unless otherwise noted. Dimensions may vary up to 7/8".

Revision date: 2025-03-06

Mesa Flush Mount - 6pc

Product Dimensions *Dimensions may vary up to 7/8"*

Overall Height	OAH	9 in
Overall Width	OAW	25.2 in
Overall Depth	OAD	20.9 in
Canopy Height	CH	1.9 in
Canopy Diameter	CDia	7.5 in

Glass Dimensions

Medium Qty		6
Medium Glass Height	GH	5.5 in
Medium Glass Width	GW	7.6 in

Electrical

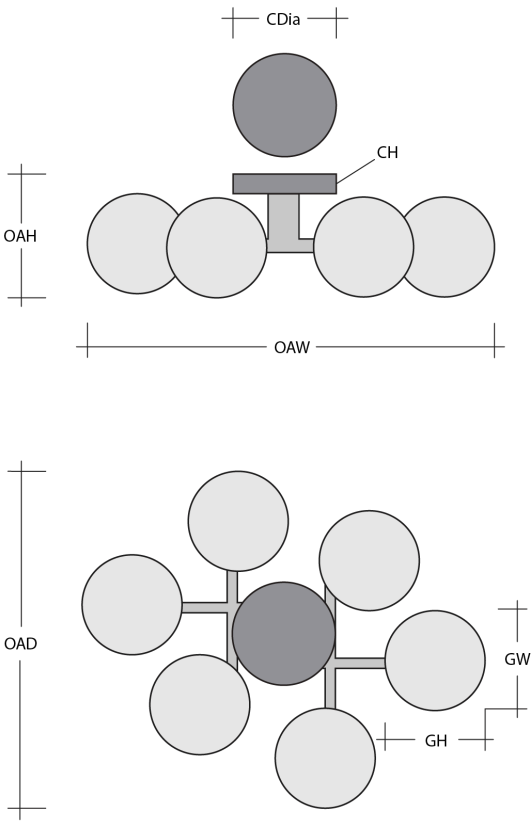
Bulb/Lamping Qty		6
Bulb/Lamping Type		LED
Wattage		16 watts
Voltage		120 volts
Total Source Lumens		1399 lumens
Dimming Type		TRIAC/ELV
Correlated Color Temp: CCT		2700K or 3000K
Color Rendering Index: CRI		93+
Certification		ETL

Installation & Mounting

Weight: Lbs		18 lbs
Mounting Type		J-Box
Minimum J-Box size		4L X 4W X 1.5D in
Suspension Type		Rod
Flat or Sloped		Sloped
Max Slope	SA	45 degrees
Slope Orientation		All
Location		Indoor/Dry

Other Information

Warranty		See Website
----------	--	-------------



Project Notes

Name:

Location:

Quantity:

Finish Color:

Glass Color:

Notes: