

Blossom Double Sconce

A whimsical celebration of organic design, this versatile 25" sconce features two 'Blossom' artisan blown glass shades with metalwork detail and backplate. Can be mounted horizontally or vertically. Integrated LED light illuminates each glass shade without the distraction of a filament bulb. Offered in eight finishes.

Finishes



Beige Silver
(BS)



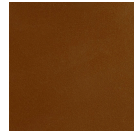
Flat Bronze
(FB)



Gilded Brass
(GB)



Matte Black
(MB)



Burnished
Bronze (BB)



Classic
Silver (CS)



Graphite
(GP)



Novel Brass
(NB)



Gunmetal
(GM)



Heritage
Brass (HB)



Satin Nickel
(SN)



Oil Rubbed
Bronze (RB)

Glass Colors



Blossom
Clear (BC)

Product Notes - PLEASE READ:

- All Hammerton Studio fixtures are handcrafted by artisans. Subtle imperfections reflect the mark of the maker and should be expected.
- This product may incorporate both steel and aluminum material. Transparent finishes may vary between steel and aluminum components.
- Products incorporating artisan blown and cast glass may create dramatic patterns of light and shadow on surrounding surfaces. While this is often desirable, shadowing can be minimized by adding recessed ceiling light to the installation area.

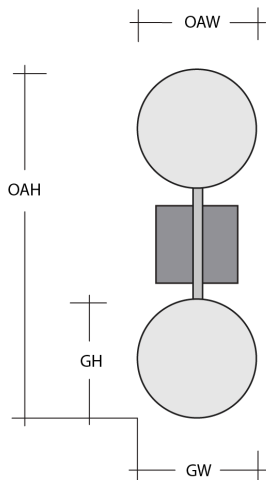
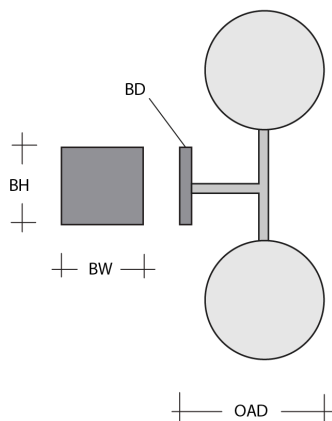
General Notes:

- Visit studio.hammerton.com to read our complete warranty.
- All dimensions are in inches unless otherwise noted. Dimensions may vary up to 7/8".

Revision date: 2025-03-11

[Scan for Product & Install Info](#)





Blossom Double Sconce

Product Dimensions <i>Dimensions may vary up to 7/8"</i>		
Overall Height	OAH	24.9 in
Overall Width	OAW	5.6 ±2 in
Overall Depth	OAD	7.4 in
Backplate Height	BH	4.5 in
Backplate Width	BW	4.5 in
Backplate Depth	BD	0.5 in

Glass Dimensions		
Medium Qty		2
Medium Glass Height	GH	8.5 ±1.5 in
Medium Glass Width	GW	5.6 ±2 in

Electrical	
Bulb/Lamping Qty	2
Bulb/Lamping Type	LED
Wattage	6 watts
Voltage	120 volts
Total Source Lumens	466 lumens
Dimming Type	TRIAC/ELV 0-10V
Correlated Color Temp: CCT	2700K or 3000K
Color Rendering Index: CRI	93+
Certification	ETL

Installation & Mounting	
Weight: Lbs	9 lbs
Mounting Type	J-Box
Minimum J-Box size	4L X 4W X 1.5D in
Location	Indoor/Dry

Other Information	
Warranty	See Website

Project Notes

Name: _____

Location: _____

Quantity: _____

Finish Color: _____

Glass Color: _____

Notes: _____