



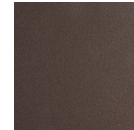
## Nova Tempo Sconce

The Nebula Nova Tempo Sconce features a softly undulant 10"W oval shade in artisan blown crystal glass with an LED-illuminated cast crystal glass diffuser in a choice of three styles. For a more traditional look, order with an E26 base that takes one 40W bulb.

### Finishes



Beige Silver  
(BS)



Flat Bronze  
(FB)



Gilded Brass  
(GB)



Matte Black  
(MB)



Burnished  
Bronze (BB)



Classic  
Silver (CS)



Graphite  
(GP)

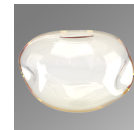


Novel Brass  
(NB)

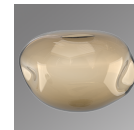
### Glass Colors



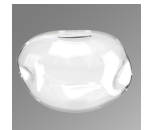
Smoke  
(FS,GS,ZS)



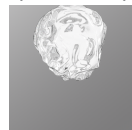
Amber  
(FA,GA,ZA)



Bronze  
(FB,GB,ZB)



Clear  
(FC,GC,ZC)



Floret  
(FS,FA,FB,FC)



Geo  
(GA,GB,GC,GS)



Zircon  
(ZA,ZB,ZC,ZS)

### Product Notes - PLEASE READ:

- All Hammerton Studio fixtures are handcrafted by artisans. Subtle imperfections reflect the mark of the maker and should be expected.
- This product may incorporate both steel and aluminum material. Transparent finishes may vary between steel and aluminum components.
- Products incorporating artisan blown and cast glass may create dramatic patterns of light and shadow on surrounding surfaces. While this is often desirable, shadowing can be minimized by adding recessed ceiling light to the installation area.

### General Notes:

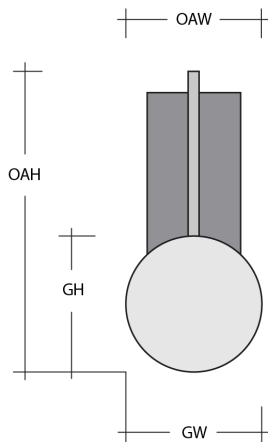
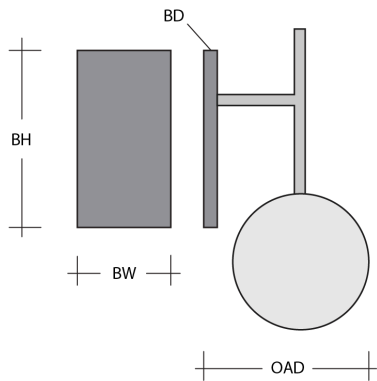
- Visit [studio.hammerton.com](https://studio.hammerton.com) to read our complete warranty.
- All dimensions are in inches unless otherwise noted. Dimensions may vary up to 7/8".

Revision date: 2025-03-18

[Scan for Product & Install Info](#)



Nova Tempo Sconce



Product Dimensions <i>Dimensions may vary up to 7/8"</i>		
Overall Height	OAH	19.2 in
Overall Width	OAW	10 in
Overall Depth	OAD	11 in
Backplate Height	BH	12 in
Backplate Width	BW	5 in
Backplate Depth	BD	0.5 in

Glass Dimensions		
Small Qty		1
Small Glass Height	GH	7.4 in
Small Glass Width	GW	10 in

Electrical		
Bulb/Lamping Qty		1
Bulb/Lamping Type		LED
Wattage		6 watts
Voltage		120 volts
Total Source Lumens		420 lumens
Dimming Type		TRIAC/ELV 0-10V
Correlated Color Temp: CCT		2700K or 3000K
Color Rendering Index: CRI		93+
Certification		ETL

Installation & Mounting		
Weight: Lbs		8 lbs
Mounting Type		J-Box
Minimum J-Box size		4L X 4W X 1.5D in
Location		Indoor/Dry

Other Information		
Warranty		See Website

Project Notes

Name: \_\_\_\_\_

Location: \_\_\_\_\_

Quantity: \_\_\_\_\_

Finish Color: \_\_\_\_\_

Glass Color: \_\_\_\_\_

Notes: \_\_\_\_\_