

Gaia Double Sconce

Featuring beautifully contoured orbs of hand-blown lead-free crystal, the Gaia double sconce elevates the familiar round glass shade to a modern organic interpretation of the natural world. Gaia lighting is illuminated with 93 CRI integrated LED and includes a choice of glass colors, finishes and color temperature options.



Finishes



Beige Silver
(BS)



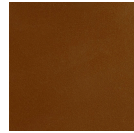
Flat Bronze
(FB)



Gilded Brass
(GB)



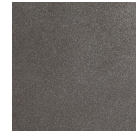
Matte Black
(MB)



Burnished
Bronze (BB)



Classic
Silver (CS)



Graphite
(GP)



Novel Brass
(NB)



Gunmetal
(GM)



Heritage
Brass (HB)



Satin Nickel
(SN)



Oil Rubbed
Bronze (RB)

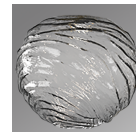
Glass Colors



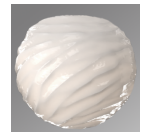
Amber (A)



Clear (C)



Smoke (S)



Opal White
(WL)

Product Notes - PLEASE READ:

- All Hammerton Studio fixtures are handcrafted by artisans. Subtle imperfections reflect the mark of the maker and should be expected.
- This product may incorporate both steel and aluminum material. Transparent finishes may vary between steel and aluminum components.
- Products incorporating artisan blown and cast glass may create dramatic patterns of light and shadow on surrounding surfaces. While this is often desirable, shadowing can be minimized by adding recessed ceiling light to the installation area.

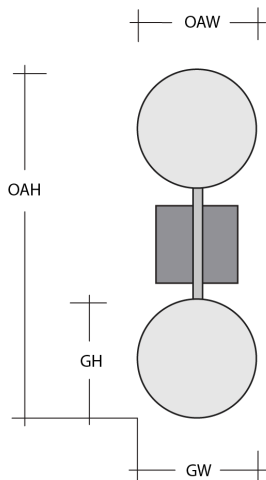
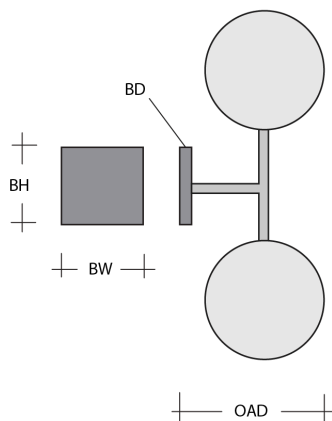
General Notes:

- Visit studio.hammerton.com to read our complete warranty.
- All dimensions are in inches unless otherwise noted. Dimensions may vary up to 7/8".

Revision date: 2025-03-12

[Scan for Product & Install Info](#)





Gaia Double Sconce

Product Dimensions			Dimensions may vary up to 7/8"
Overall Height	OAH	21.6 in	
Overall Width	OAW	7.6 in	
Overall Depth	OAD	8.4 in	
Backplate Height	BH	4.5 in	
Backplate Width	BW	4.5 in	
Backplate Depth	BD	0.5 in	

Glass Dimensions		
Medium Qty		2
Medium Glass Height	GH	7.2 in
Medium Glass Width	GW	7.6 in

Electrical		
Bulb/Lamping Qty		2
Bulb/Lamping Type		LED
Wattage		6 watts
Voltage		120 volts
Total Source Lumens		466 lumens
Dimming Type		TRIAC/ELV 0-10V
Correlated Color Temp: CCT		2700K or 3000K
Color Rendering Index: CRI		93+
Certification		ETL

Installation & Mounting		
Weight: Lbs		10 lbs
Mounting Type		J-Box
Minimum J-Box size		4L X 4W X 1.5D in
Location		Indoor/Dry

Other Information		
Warranty		See Website

Project Notes

Name: _____

Location: _____

Quantity: _____

Finish Color: _____

Glass Color: _____

Notes: _____