



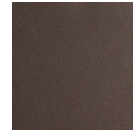
## Luna Double Sconce

The Luna Double Sconce elevates a familiar silhouette with a fresh modern update to the traditional round glass shade. Softly undulant orbs of handblown crystal glass enclose an LED-illuminated cast crystal glass diffuser in a choice of three styles.

### Finishes



Beige Silver  
(BS)



Flat Bronze  
(FB)



Gilded Brass  
(GB)



Matte Black  
(MB)



Burnished  
Bronze (BB)



Classic  
Silver (CS)



Graphite  
(GP)

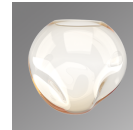


Novel Brass  
(NB)

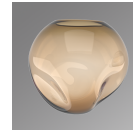
### Glass Colors



Smoke  
(FS,GS,ZS)



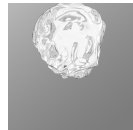
Amber  
(FA,GA,ZA)



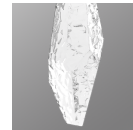
Bronze  
(FB,GB,ZB)



Clear  
(FC,GC,ZC)



Floret  
(FS,FA,FB,FC)



Geo  
(GA,GB,GC,GS)



Zircon  
(ZA,ZB,ZC,ZS)

### Product Notes - PLEASE READ:

- All Hammerton Studio fixtures are handcrafted by artisans. Subtle imperfections reflect the mark of the maker and should be expected.
- This product may incorporate both steel and aluminum material. Transparent finishes may vary between steel and aluminum components.
- Products incorporating artisan blown and cast glass may create dramatic patterns of light and shadow on surrounding surfaces. While this is often desirable, shadowing can be minimized by adding recessed ceiling light to the installation area.

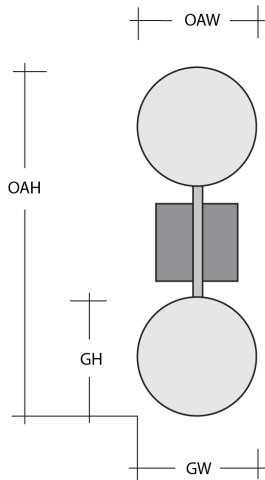
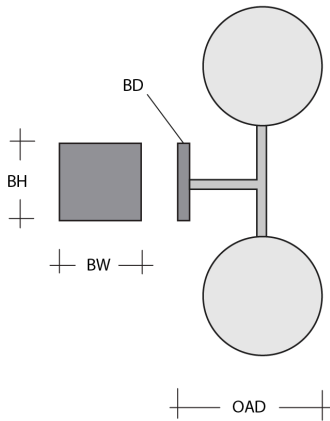
### General Notes:

- Visit [studio.hammerton.com](http://studio.hammerton.com) to read our complete warranty.
- All dimensions are in inches unless otherwise noted. Dimensions may vary up to 7/8".

Revision date: 2025-03-12

[Scan for Product & Install Info](#)





## Luna Double Sconce

### Product Dimensions *Dimensions may vary up to 7/8"*

Overall Height	OAH	20.5 in
Overall Width	OAW	7 in
Overall Depth	OAD	8.1 in
Backplate Height	BH	4.5 in
Backplate Width	BW	4.5 in
Backplate Depth	BD	0.5 in

### Glass Dimensions

Medium Qty		2
Medium Glass Height	GH	6.5 in
Medium Glass Width	GW	7 in

### Electrical

Bulb/Lamping Qty		2
Bulb/Lamping Type		LED
Wattage		6 watts
Voltage		120 volts
Total Source Lumens		466 lumens
Dimming Type		TRIAC/ELV 0-10V
Correlated Color Temp: CCT		2700K or 3000K
Color Rendering Index: CRI		93+
Certification		ETL

### Installation & Mounting

Weight: Lbs		9 lbs
Mounting Type		J-Box
Minimum J-Box size		4L X 4W X 1.5D in
Location		Indoor/Dry

### Other Information

Warranty		See Website
----------	--	-------------

### Project Notes

Name:

Location:

Quantity:

Finish Color:

Glass Color:

Notes: