

## Torno Mandrel Sconce

Torno Mandrel Sconces bring the elegance of handcrafted ceramic to the walls in any hallway, bedroom, or living space. With a warm, ambient glow, they offer a subtle yet striking statement that embodies the perfect balance of craftsmanship and simplicity. Available in single and double configurations that can be hung vertically or horizontally.



### Finishes



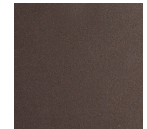
Burnished  
Bronze (BB)



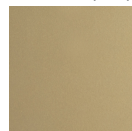
Beige Silver  
(BS)



Classic  
Silver (CS)



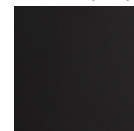
Flat Bronze  
(FB)



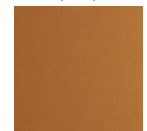
Gilded Brass  
(GB)



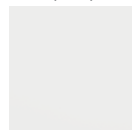
Graphite  
(GP)



Matte Black  
(MB)



Novel Brass  
(NB)



Salt White  
(WI)

### Glass Options



Amber (A)



Bronze (B)



Clear (C)



Smoke (S)

### Accent



Chalk  
Ceramic  
(CB1)



Charcoal  
Ceramic  
(CB2)

### Product Notes - PLEASE READ:

- All Hammerton Studio fixtures are handcrafted by artisans. Subtle imperfections reflect the mark of the maker and should be expected.
- This product may incorporate both steel and aluminum material. Transparent finishes may vary between steel and aluminum components.
- Products incorporating artisan blown and cast glass may create dramatic patterns of light and shadow on surrounding surfaces. While this is often desirable, shadowing can be minimized by adding recessed ceiling light to the installation area.

### General Notes:

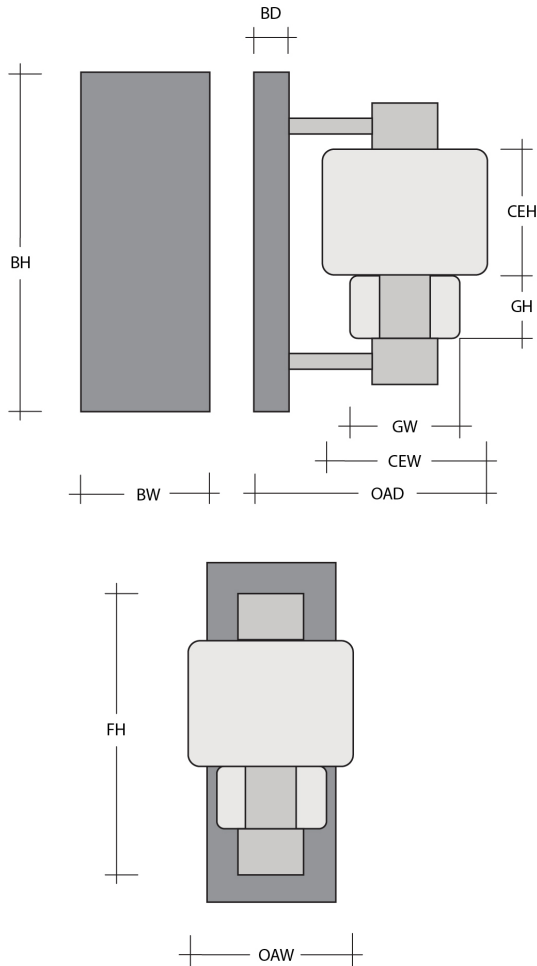
- Visit [studio.hammerton.com](http://studio.hammerton.com) to read our complete warranty.
- All dimensions are in inches unless otherwise noted. Dimensions may vary up to 7/8".

Revision date: 2025-12-02

Scan for Product &  
[Install Info](#)



## Torno Mandrel Sconce



### Product Dimensions *Dimensions may vary up to 7/8"*

Overall Width	OAW	8.5 in
Overall Depth	OAD	10 in
Fixture Height	FH	15.5 in
Backplate Height	BH	17.5 in
Backplate Width	BW	5.5 in
Backplate Depth	BD	1.2 in

### Glass Dimensions

Glass Qty		1
Glass Height	GH	3.8 in
Glass Width	GW	5.4 in
Ceramic Qty		1
Ceramic Height	CEH	6.2 in
Ceramic Width	CEW	8.5 in

### Electrical

Bulb/Lamping Qty		1
Bulb/Lamping Type		LED
Wattage		8.5 watts
Voltage		120 volts
Total Source Lumens		850 lumens
Dimming Type		TRIAC/ELV
Correlated Color Temp: CCT		2700K or 3000K
Color Rendering Index: CRI		93+
Certification		ETL

### Installation & Mounting

Weight: Lbs		13.5 lbs
Mounting Type		J-Box
Flat or Sloped		Sloped
Slope Orientation		All
Location		Indoor/Damp

### Other Information

Warranty		See Website
----------	--	-------------

### Project Notes

Name:

Location:

Quantity:

Finish Color:

Glass Color:

Notes: