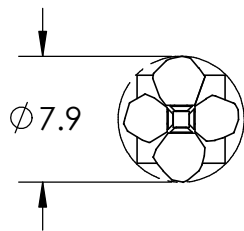
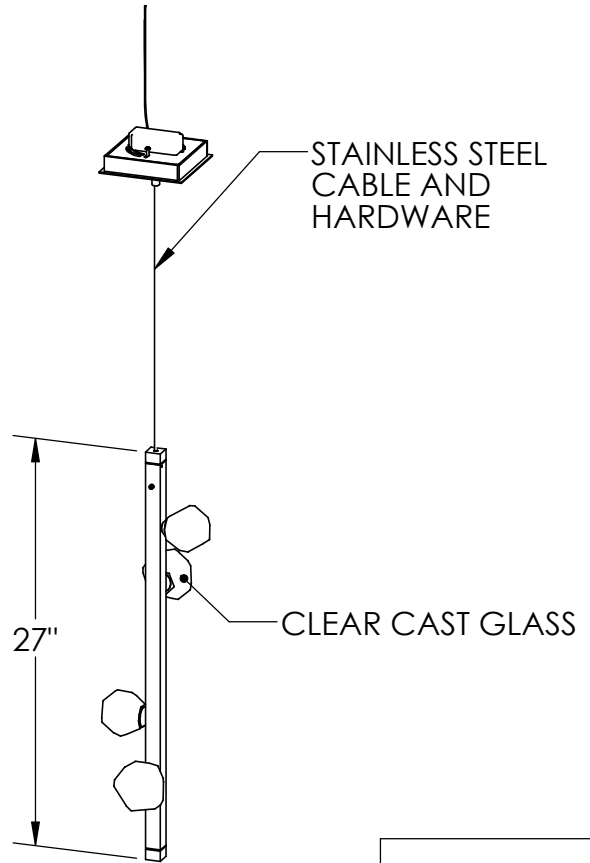
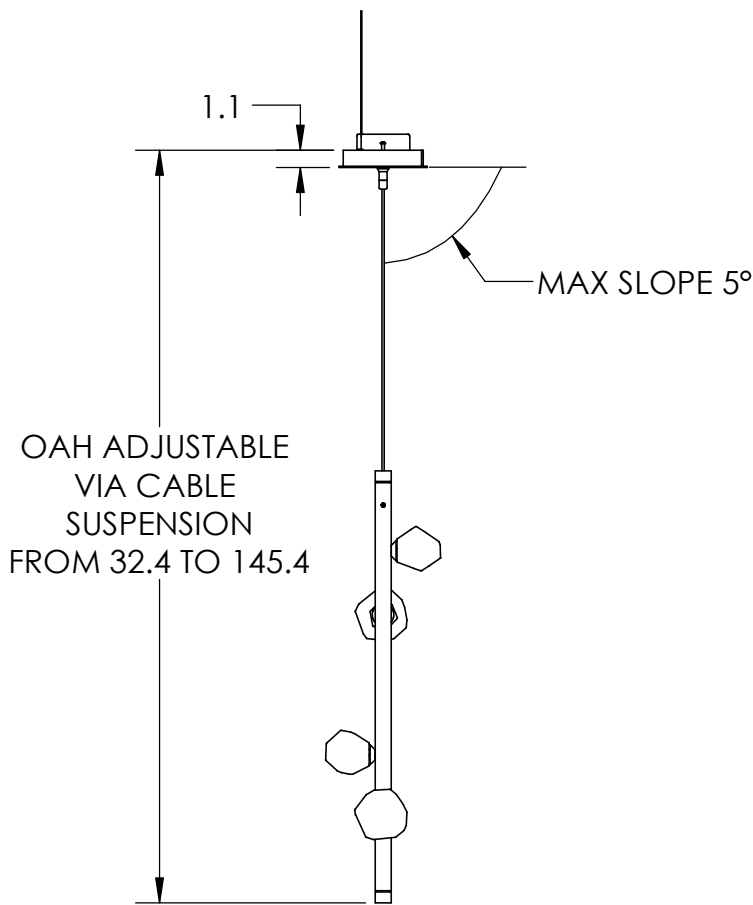
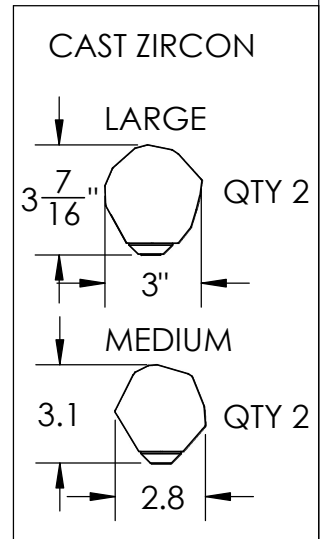


Collection: STELLA

Product #: LAB0070-01



**** NOTE ****
 DRIVER TO BE INSTALLED IN J-BOX.
 MINIMUM SIZE OF J-BOX REQUIRED IS
 4" L x 4" W x 1.5" H
 INSTALLING ON A HIGHER SLOPE
 ANGLE THAN THE MAX SPECIFIED WILL
 SHORT OUT FIXTURE

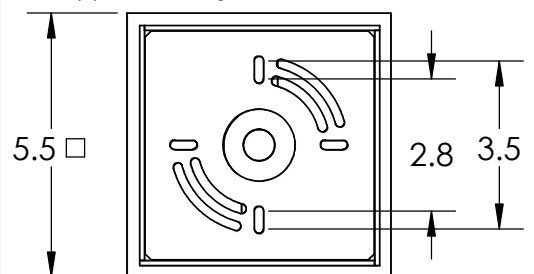


All dimensions are shown in inches unless otherwise stated.
 Visit hammertonstudio.com for product options.

19/06/2025 ©

Mounting Packet: T	Weight(lbs.): 7	Electrical Type: LED	CCT: 3000 K
UL Location: DRY		Elec. Qty: 4	Wattage: 5 Voltage: 120
Finish: SEE WEBSITE FOR OPTIONS		Source Lumens: Ambient: 620	
Top Diffuser: N/A		Dimmable: Forward/Reverse Phase To 1%	
Bottom Diffuser: N/A		CRI: 93+	Power Factor: >0.9

Canopy Mounting Detail



MOUNTS DIRECTLY TO J-BOX

All Hammerton fixtures are handcrafted by artisans. Subtle imperfections reflect the mark of the artisan and should be expected in any handcrafted product. Dimensions may vary up to 7/8".

© Copyright 2021. All rights in design, detail or invention of this drawing are reserved as the property of Hammerton. Any imitation or adaptation without written consent is strictly prohibited.