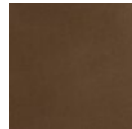




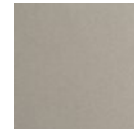
Tessera Pendant - Large

The 2,500-year old art of glass mosaic tiling is brilliantly brought to light in the modern-styled Tessera Pendant. Choose from five tile motifs in artisan cast crystal glass, two wood-inspired accent motifs, and several finishes. Tessera fixtures are illuminated with 93 CRI integrated LED and are available in 2700K or 3000K color temperature.

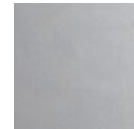
Finishes



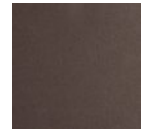
Burnished Bronze (BB)



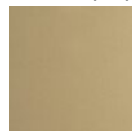
Beige Silver (BS)



Classic Silver (CS)



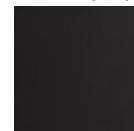
Flat Bronze (FB)



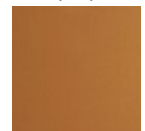
Gilded Brass (GB)



Graphite (GP)

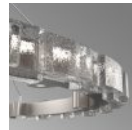


Matte Black (MB)



Novel Brass (NB)

Glass Options



Tetro Cast Glass (TE)



Pavé Cast Glass (TP)



Facet Cast Glass (TF)



Orb Cast Glass (TO)



Wave Cast Glass (TW)

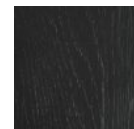
Accent



Matching Panel (000)



Light Oak (W01)



Dark Oak (W02)

Product Notes - PLEASE READ:

- All Hammerton Studio fixtures are handcrafted by artisans. Subtle imperfections reflect the mark of the maker and should be expected.
- This product may incorporate both steel and aluminum material. Transparent finishes may vary between steel and aluminum components.
- Products incorporating artisan blown and cast glass may create dramatic patterns of light and shadow on surrounding surfaces. While this is often desirable, shadowing can be minimized by adding recessed ceiling light to the installation area.

General Notes:

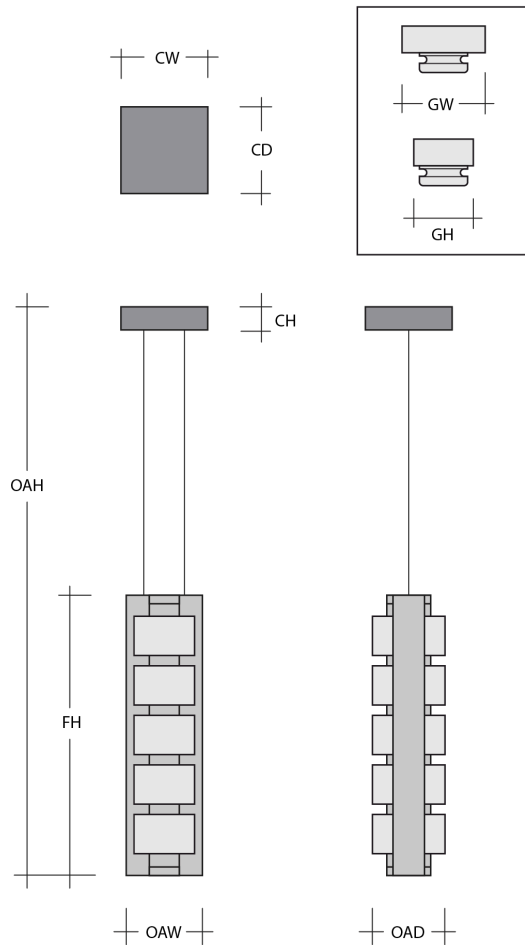
- Visit studio.hammerton.com to read our complete warranty.
- All dimensions are in inches unless otherwise noted. Dimensions may vary up to 7/8".

Revision date: 2025-06-13

[Scan for Product & Install Info](#)



Tessera Pendant - Large



Product Dimensions *Dimensions may vary up to 7/8"*

Overall Height	OAH	28 – 120 in
Overall Width	OAW	7.3 in
Overall Depth	OAD	4.6 – 7.3 in
Canopy Height	CH	1.5 in
Canopy Width	CW	5.5 in
Canopy Depth	CD	5.5 in
Fixture Height	FH	26.2 in

Notes
 Fixture and Glass dimensions will vary based on glass option selection

Glass Dimensions

Glass Qty		14
Glass Height	GH	2.5 – 4.7 in
Glass Width	GW	2.5 – 4 in

Electrical

Bulb/Lamping Type	LED
Wattage	28 watts
Voltage	24 volts
Total Source Lumens	3143 lumens
Dimming Type	TRIAC/ELV
Correlated Color Temp: CCT	3000K
Color Rendering Index: CRI	93+
Certification	ETL

Installation & Mounting

Weight: Lbs	37 lbs
Mounting Type	J-Box
Suspension Type	Cable
Location	Indoor/Dry

Other Information

Warranty	See Website
----------	-------------

Project Notes

Name:

Location:

Quantity:

Finish Color:

Glass Color:

Notes: