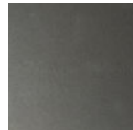


## Nightfall Outdoor Sconce - Medium

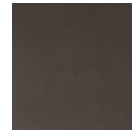
New Dark Sky Lighting! Material & motif options extend the design potential of our new Nightfall sconce to suit a wide range of architectural styles. This DarkSky Approved sconce design is available in a choice of three sizes, three AAMA-2604 rated finishes, and 2700 or 3000k color temperatures, with a lifetime coastal finish warranty.



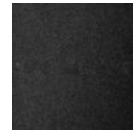
### Finishes



Argento  
Grey (AG)



Statuary  
Bronze (SB)



Textured  
Black (TB)

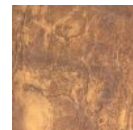
### Accent



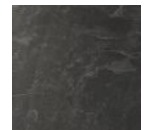
Bianco  
Marble (S01)



Zebrano  
Marble (S02)



Sienna Slate  
(S03)



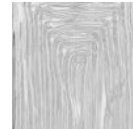
Carbon Slate  
(S04)



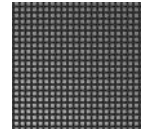
Euclid Motif  
(P01)



Tidal Cast  
Glass (TT)



Linea Cast  
Glass (TL)



Medium  
Mesh (M01)

### Product Notes - PLEASE READ:

- All Hammerton Studio fixtures are handcrafted by artisans. Subtle imperfections reflect the mark of the maker and should be expected.
- This product may incorporate both steel and aluminum material. Transparent finishes may vary between steel and aluminum components.
- Products incorporating artisan blown and cast glass may create dramatic patterns of light and shadow on surrounding surfaces. While this is often desirable, shadowing can be minimized by adding recessed ceiling light to the installation area.

### General Notes:

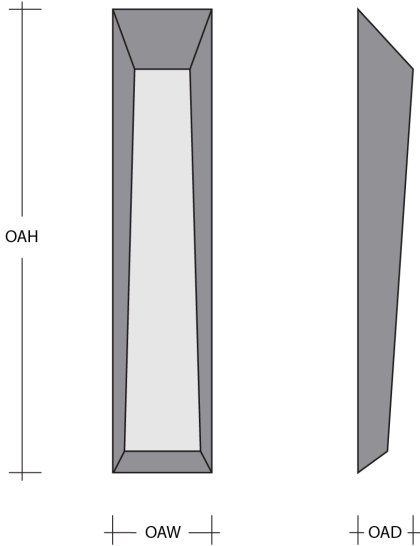
- Visit [studio.hammerton.com](http://studio.hammerton.com) to read our complete warranty.
- All dimensions are in inches unless otherwise noted. Dimensions may vary up to 7/8".

Revision date: 2025-07-15

[Scan for Product & Install Info](#)



## Nightfall Outdoor Sconce - Medium



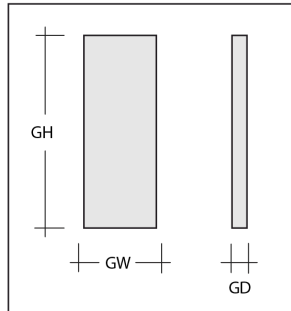
### Product Dimensions *Dimensions may vary up to 7/8"*

Overall Height	OAH	36.4 in
Overall Width	OAW	7.4 in
Overall Depth	OAD	4.1 in
Notes		Weights will vary depending on motif and glass selection.
Accent Height	AH	28.4 in
Accent Width	AW	4.7 in
Accent Depth	AD	3.5 in

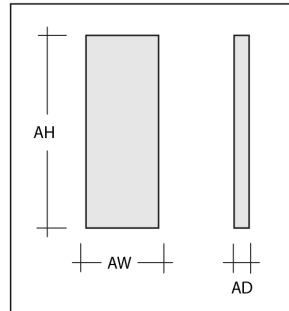
### Glass Dimensions

Glass Qty		2
Glass Height	GH	14 in
Glass Width	GW	4 in
Glass Depth	GD	1 in

Glass Accent Dimensions



Non-glass Accent Dimensions



### Electrical

Bulb/Lamping Qty		2
Bulb/Lamping Type		LED
Wattage		36 watts
Voltage		120 volts
Total Source Lumens		4018 lumens
Dimming Type		TRIAC/ELV
Correlated Color Temp: CCT		2700K or 3000K
Color Rendering Index: CRI		93+
Certification		ETL
Delivered Lumens		20.6 lumens

### Project Notes

Name:

Location:

Quantity:

Finish Color:

Glass Color:

Notes:

### Installation & Mounting

Weight: Lbs	20.4 lbs
Mounting Type	J-Box
Location	Outdoor/Wet

### Other Information

Warranty	See Website
Dark Sky Approved	Yes