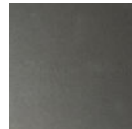


Twilight Outdoor Sconce - Small

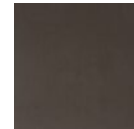
New Dark Sky Lighting! Material & motif options extend the design potential of our new Twilight sconce to suit a wide range of architectural styles. This DarkSky Approved sconce design is available in a choice of three sizes, three AAMA-2604 rated finishes, and 2700 or 3000k color temperatures, with a lifetime coastal finish warranty.



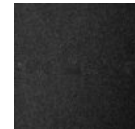
Finishes



Argento
Grey (AG)



Statuary
Bronze (SB)



Textured
Black (TB)

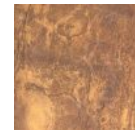
Accent



Bianco
Marble (S01)



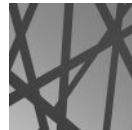
Zebrano
Marble (S02)



Sienna Slate
(S03)



Carbon Slate
(S04)



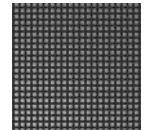
Euclid Motif
(P01)



Tidal Cast
Glass (TT)



Linea Cast
Glass (TL)



Medium
Mesh (M01)

Product Notes - PLEASE READ:

- All Hammerton Studio fixtures are handcrafted by artisans. Subtle imperfections reflect the mark of the maker and should be expected.
- This product may incorporate both steel and aluminum material. Transparent finishes may vary between steel and aluminum components.
- Products incorporating artisan blown and cast glass may create dramatic patterns of light and shadow on surrounding surfaces. While this is often desirable, shadowing can be minimized by adding recessed ceiling light to the installation area.

General Notes:

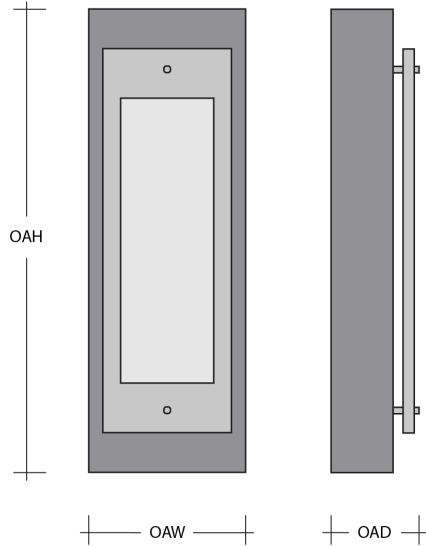
- Visit studio.hammerton.com to read our complete warranty.
- All dimensions are in inches unless otherwise noted. Dimensions may vary up to 7/8".

Revision date: 2025-07-15

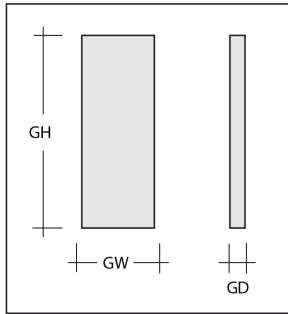
[Scan for Product & Install Info](#)



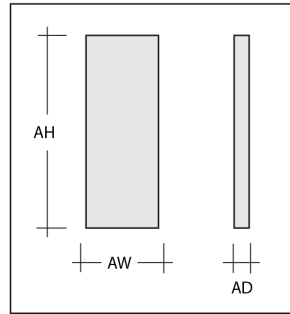
Twilight Outdoor Sconce - Small



Glass Accent Dimensions



Non-glass Accent Dimensions



Project Notes

Name:

Location:

Quantity:

Finish Color:

Glass Color:

Notes:

Product Dimensions *Dimensions may vary up to 7/8"*

Overall Height	OAH	20.3 in
Overall Width	OAW	6.7 in
Overall Depth	OAD	4 in
Notes		Weights will vary depending on motif and glass selection.

Accent Height	AH	20.3 in
Accent Width	AW	3.5 in
Accent Depth	AD	3 in

Glass Dimensions

Glass Qty		1
Glass Height	GH	14 in
Glass Width	GW	4 in
Glass Depth	GD	1 in

Electrical

Bulb/Lamping Qty		2
Bulb/Lamping Type		LED
Wattage		21.9 watts
Voltage		120 volts
Total Source Lumens		2460 lumens
Dimming Type		TRIAC/ELV
Correlated Color Temp: CCT		2700K or 3000K
Color Rendering Index: CRI		93+
Certification		ETL
Delivered Lumens		4.3 lumens

Installation & Mounting

Weight: Lbs		16.2 lbs
Mounting Type		J-Box
Location		Outdoor/Wet

Other Information

Warranty		See Website
Dark Sky Approved		Yes