



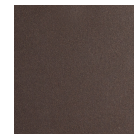
Mesa Modern Branch - 10pc

Beautifully striated diffusers in LED-illuminated and artisan blown crystal glass evoke the rugged beauty of iconic Southwest landscapes in the Mesa modern branch chandelier. Each is handcrafted by Hammerton artisans from up to five pounds of molten glass and is illuminated with 93 CRI integrated LED.

Finishes



Beige Silver
(BS)



Flat Bronze
(FB)



Gilded Brass
(GB)



Matte Black
(MB)



Burnished
Bronze (BB)



Classic
Silver (CS)



Graphite
(GP)

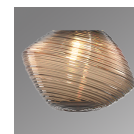


Novel Brass
(NB)

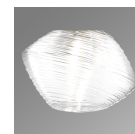
Glass Options



Amber (A)



Bronze (B)



Clear (C)



Smoke (S)

[Scan for Product & Install Info](#)



Product Notes - PLEASE READ:

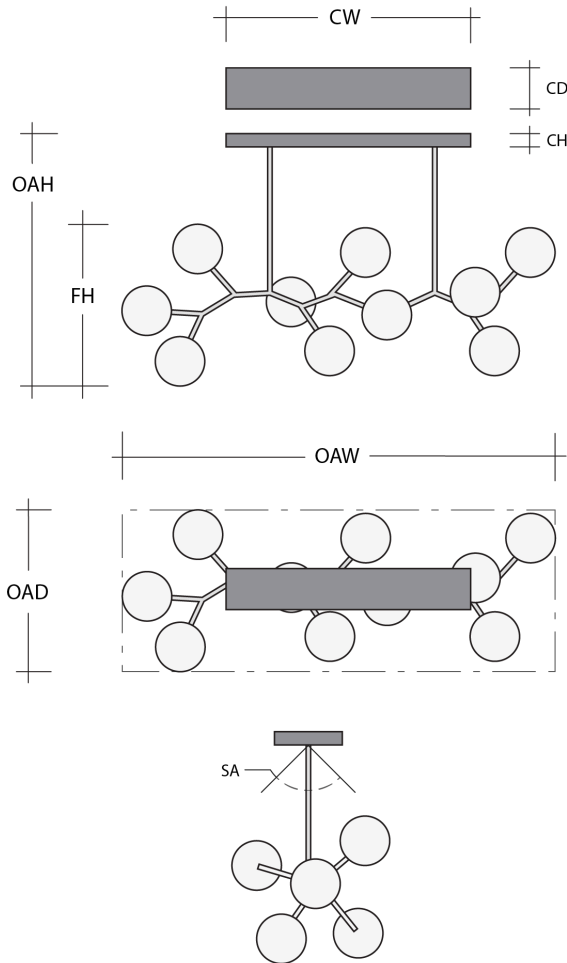
- All Hammerton Studio fixtures are handcrafted by artisans. Subtle imperfections reflect the mark of the maker and should be expected.
- This product may incorporate both steel and aluminum material. Transparent finishes may vary between steel and aluminum components.
- Products incorporating artisan blown and cast glass may create dramatic patterns of light and shadow on surrounding surfaces. While this is often desirable, shadowing can be minimized by adding recessed ceiling light to the installation area.

General Notes:

- Visit studio.hammerton.com to read our complete warranty.
- All dimensions are in inches unless otherwise noted. Dimensions may vary up to 7/8".

Revision date: 2025-05-05

Mesa Modern Branch - 10pc



Product Dimensions *Dimensions may vary up to 7/8"*

Overall Height	OAH	26 – 83 in
Overall Width	OAW	59.3 in
Overall Depth	OAD	25.4 in
Canopy Height	CH	1.9 in
Canopy Width	CW	31.5 in
Canopy Depth	CD	6 in
Fixture Height	FH	20.9 in
Notes		Dimensions can vary depending on installation

Glass Dimensions

Medium Qty		10
Medium Glass Height	GH	5.5 in
Medium Glass Width	GW	7.6 in

Electrical

Bulb/Lamping Qty		10
Bulb/Lamping Type		LED
Wattage		26 watts
Voltage		120 volts
Total Source Lumens		2332 lumens
Dimming Type		TRIAC/ELV
Correlated Color Temp: CCT		2700K or 3000K
Color Rendering Index: CRI		93+
Certification		ETL

Installation & Mounting

Weight: Lbs		39 lbs
Mounting Type		Structural
Suspension Type		Rod
Flat or Sloped		Sloped
Max Slope	SA	45 degrees
Slope Orientation		Perpendicular
Location		Indoor/Dry

Other Information

Warranty		See Website
----------	--	-------------

Project Notes

Name:

Location:

Quantity:

Finish Color:

Glass Color:

Notes: