



## Cirrus Swag 9pc Multi-Pendant

A unique fusion of kiln-fused glass, cast crystal glass and precision-crafted metal lends surprising drama to this versatile chandelier style. Placement and height of each Cirrus pendant can be easily customized during installation. Available in a choice of Smoke Granite or Clear Granite textured glass and several finishes.

### Finishes



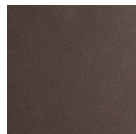
Burnished  
Bronze (BB)



Beige Silver  
(BS)



Classic  
Silver (CS)



Flat Bronze  
(FB)



Gilded Brass  
(GB)



Graphite  
(GP)

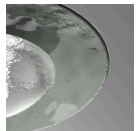


Matte Black  
(MB)

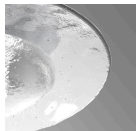


Novel Brass  
(NB)

### Glass Options



Smoke  
Granite (SG)



Clear  
Granite (CG)

### Product Notes - PLEASE READ:

- All Hammerton Studio fixtures are handcrafted by artisans. Subtle imperfections reflect the mark of the maker and should be expected.
- This product may incorporate both steel and aluminum material. Transparent finishes may vary between steel and aluminum components.
- Products incorporating artisan blown and cast glass may create dramatic patterns of light and shadow on surrounding surfaces. While this is often desirable, shadowing can be minimized by adding recessed ceiling light to the installation area.

### General Notes:

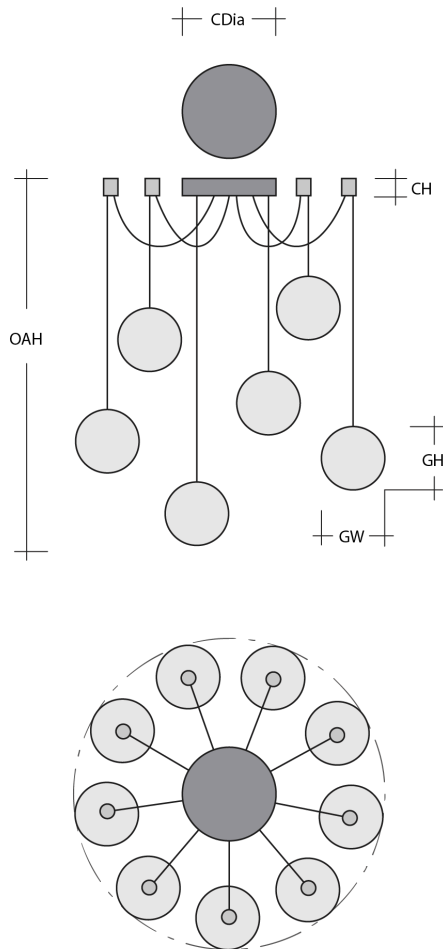
- Visit [studio.hammerton.com](http://studio.hammerton.com) to read our complete warranty.
- All dimensions are in inches unless otherwise noted. Dimensions may vary up to 7/8".

Revision date: 2025-11-05

Scan for Product &  
[Install Info](#)



## Cirrus Swag 9pc Multi-Pendant



### Product Dimensions *Dimensions may vary up to 7/8"*

|                  |   |               |
|------------------|---|---------------|
| Overall Height   | OAH   | 12.5 – 120 in |
| Overall Diameter | OADia   | 60 – 298.4 in |
| Canopy Height    | CH  | 2.5 in        |
| Canopy Diameter  | CDia  | 9 in          |
| Notes            | Overall max height and diameter dependent on installation. Radial pendant hooks are Black only and will not be finish-matched to the selected fixture finish. |               |

### Glass Dimensions

|                     |    |       |
|---------------------|----|-------|
| Large Qty           |    | 3     |
| Large Glass Height  | GH | 11 in |
| Large Glass Width   | GW | 14 in |
| Medium Qty          |    | 3     |
| Medium Glass Height | GH | 11 in |
| Medium Glass Width  | GW | 12 in |
| Small Qty           |    | 3     |
| Small Glass Height  | GH | 11 in |
| Small Glass Width   | GW | 9 in  |

### Electrical

|                            |             |
|----------------------------|-------------|
| Bulb/Lamping Qty           | 9           |
| Bulb/Lamping Type          | LED         |
| Wattage                    | 36 watts    |
| Voltage                    | 120 volts   |
| Total Source Lumens        | 3060 lumens |
| Dimming Type               | TRIAC/ELV   |
| Correlated Color Temp: CCT | 3000K       |
| Color Rendering Index: CRI | 93+         |
| Certification              | ETL         |

### Installation & Mounting

|                   |               |
|-------------------|---------------|
| Weight: Lbs       | 95 lbs        |
| Mounting Type     | J-Box         |
| Suspension Type   | Cloth Cord    |
| Flat or Sloped    | Sloped        |
| Max Slope         | SA 45 degrees |
| Slope Orientation | All           |
| Location          | Indoor/Dry    |

### Other Information

|          |             |
|----------|-------------|
| Warranty | See Website |
|----------|-------------|

### Project Notes

Name:

Location:

Quantity:

Finish Color:

Glass Color:

Notes: