



## Hub & Spoke - Luna - Linear - 6pc

Suitable for both walls and ceilings, this modular design featuring our Luna artisan blown glass creates a captivating focal point on any interior surface. Available in 3 and 6-light sizes.

### Finishes



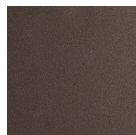
Burnished  
Bronze (BB)



Beige Silver  
(BS)



Classic  
Silver (CS)



Flat Bronze  
(FB)



Gilded Brass  
(GB)



Graphite  
(GP)



Matte Black  
(MB)

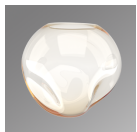


Novel Brass  
(NB)

### Glass Options



Smoke  
(FS,GS,ZS)



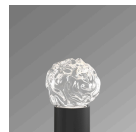
Amber  
(FA,GA,ZA)



Bronze  
(FB,GB,ZB)



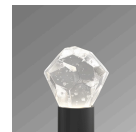
Clear  
(FC,GC,ZC)



Floret  
(FS,FA,FB,FC)



Geo  
(GA,GB,GC,GS)



Zircon  
(ZA,ZB,ZC,ZS)

### Product Notes - PLEASE READ:

- All Hammerton Studio fixtures are handcrafted by artisans. Subtle imperfections reflect the mark of the maker and should be expected.
- This product may incorporate both steel and aluminum material. Transparent finishes may vary between steel and aluminum components.
- Products incorporating artisan blown and cast glass may create dramatic patterns of light and shadow on surrounding surfaces. While this is often desirable, shadowing can be minimized by adding recessed ceiling light to the installation area.

### General Notes:

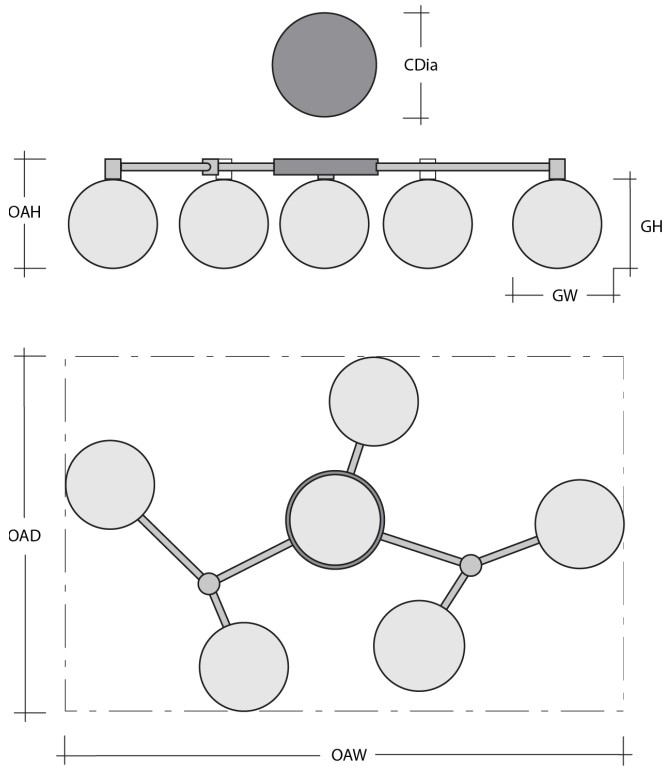
- Visit [studio.hammerton.com](http://studio.hammerton.com) to read our complete warranty.
- All dimensions are in inches unless otherwise noted. Dimensions may vary up to 7/8".

Revision date: 2025-06-16

Scan for Product &  
[Install Info](#)



## Hub & Spoke - Luna - Linear - 6pc



### Product Dimensions *Dimensions may vary up to 7/8"*

Overall Height	OAH	10.5 in
Overall Width	OAW	37.1 – 49.4 in
Overall Depth	OAD	22.3 – 41.5 in
Canopy Diameter	CDia	6 in

### Glass Dimensions

Luna Qty		6
Luna Glass Height	GH	6.5 in
Luna Glass Width	GW	7 in

### Electrical

Bulb/Lamping Qty		6
Bulb/Lamping Type		LED
Wattage		26.6 watts
Voltage		120 volts
Total Source Lumens		2522 lumens
Dimming Type		TRIAC/ELV
Correlated Color Temp: CCT		2700K or 3000K
Color Rendering Index: CRI		93+
Certification		ETL

### Installation & Mounting

Weight: Lbs		26.1 lbs
Mounting Type		J-Box
Location		Indoor/Dry

### Other Information

Warranty		See Website
----------	--	-------------

### Project Notes

Name:

Location:

Quantity:

Finish Color:

Glass Color:

Notes: