



Hub & Spoke - Cumulus - 3pc

Suitable for both walls and ceilings, this modular fixture can be easily mistaken for an art installation. Undulating 'clouds' of precision crafted, LED-illuminated metal create a captivating focal point on any interior surface. 3 and 6-light sizes are available in a choice of several single and two-tone finish combinations.

Finishes



Beige Silver
(BS)



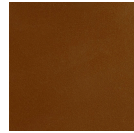
Flat Bronze
(FB)



Gilded Brass
(GB)



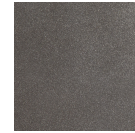
Matte Black
(MB)



Burnished
Bronze (BB)



Classic
Silver (CS)



Graphite
(GP)



Novel Brass
(NB)

Cap Styles

Accent color
matches
fixture color
(MI)

Matte Black
Accent (BI)

White
Accent (WI)

Product Notes - PLEASE READ:

- All Hammerton Studio fixtures are handcrafted by artisans. Subtle imperfections reflect the mark of the maker and should be expected.
- This product may incorporate both steel and aluminum material. Transparent finishes may vary between steel and aluminum components.
- Products incorporating artisan blown and cast glass may create dramatic patterns of light and shadow on surrounding surfaces. While this is often desirable, shadowing can be minimized by adding recessed ceiling light to the installation area.

General Notes:

- Visit studio.hammerton.com to read our complete warranty.
- All dimensions are in inches unless otherwise noted. Dimensions may vary up to 7/8".

Revision date: 2025-03-25

[Scan for Product &
Install Info](#)



Hub & Spoke - Cumulus - 3pc

Product Dimensions *Dimensions may vary up to 7/8"*

Overall Height	OAH	6.7 in
Overall Diameter	OADia	30 in
Canopy Diameter	CDia	9 in

Shade Dimensions

Large Shade Qty		1
Medium Shade Qty		1
Small Shade Qty		1
Large Shade Height	SH	5.2 in
Large Shade Width	SW	16 in
Medium Shade Height	SH	5.2 in
Medium Shade Width	SW	14 in
Small Shade Height	SH	5.2 in
Small Shade Width	SW	12 in

Electrical

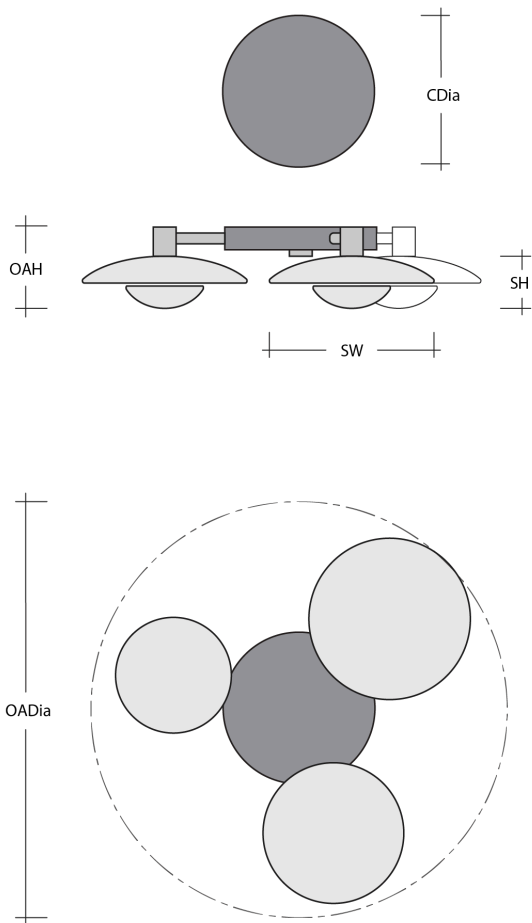
Bulb/Lamping Qty	3
Bulb/Lamping Type	LED
Wattage	12 watts
Voltage	120 volts
Total Source Lumens	1020 lumens
Dimming Type	TRIAC/ELV
Correlated Color Temp: CCT	3000K
Color Rendering Index: CRI	93+
Certification	ETL

Installation & Mounting

Weight: Lbs	18 lbs
Mounting Type	J-Box
Flat or Sloped	Sloped
Slope Orientation	All
Location	Indoor/Dry

Other Information

Warranty	See Website
----------	-------------



Project Notes

Name:

Location:

Quantity:

Finish Color:

Glass Color:

Notes: