



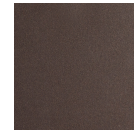
Parallel Round Chain 6pc Swag Multi-Pendant

Featuring floating LED-lit panels of glittering kiln-fused & hand-textured glass, this versatile chandelier style enables customization of the placement and height of each pendant. Each 'Parallel' glass panel is skillfully crafted by warm glass artisans in our Salt Lake City facility. Choose from several glass colors, chain styles, and finishes.

Finishes



Beige Silver
(BS)



Flat Bronze
(FB)



Gilded Brass
(GB)

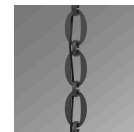


Matte Black
(MB)

Suspension



Diamond
Chain (CH1)



Oval Chain
(CH2)

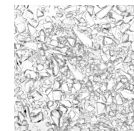


Rectangular
Chain (CH3)

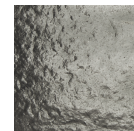
Glass Options



Bronze
Granite (BG)



Clear
Rimelight
(CR)



Smoke
Granite (SG)



Clear
Granite (CG)

Product Notes - PLEASE READ:

- All Hammerton Studio fixtures are handcrafted by artisans. Subtle imperfections reflect the mark of the maker and should be expected.
- This product may incorporate both steel and aluminum material. Transparent finishes may vary between steel and aluminum components.
- Products incorporating artisan blown and cast glass may create dramatic patterns of light and shadow on surrounding surfaces. While this is often desirable, shadowing can be minimized by adding recessed ceiling light to the installation area.

General Notes:

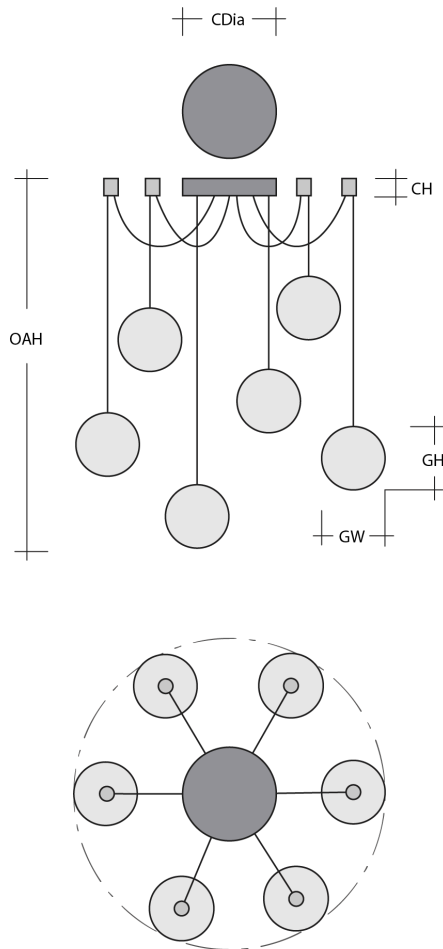
- Visit studio.hammerton.com to read our complete warranty.
- All dimensions are in inches unless otherwise noted. Dimensions may vary up to 7/8".

Revision date: 2025-10-14

Scan for Product &
[Install Info](#)



Parallel Round Chain 6pc Swag Multi-Pendant



Product Dimensions *Dimensions may vary up to 7/8"*

Overall Height	OAH	16.5 – 60 in
Canopy Height	CH	0.8 in
Canopy Diameter	CDia	6 in
Notes	Individual pendant length adjustable from 16.5" to 60", dependent on installation.	

Glass Dimensions

Glass Qty	12	
Glass Height	GH	12.9 in
Glass Width	GW	4.3 in

Electrical

Bulb/Lamping Qty	6	
Bulb/Lamping Type	LED	
Wattage	16 watts	
Voltage	120 volts	
Total Source Lumens	1399 lumens	
Dimming Type	TRIAC/ELV	
Correlated Color Temp: CCT	2700K or 3000K	
Color Rendering Index: CRI	93+	
Certification	ETL	

Installation & Mounting

Weight: Lbs	16 lbs	
Mounting Type	J-Box	
Minimum J-Box size	4L X 4W X 1.5D in	
Suspension Type	Chain	
Flat or Sloped	Sloped	
Max Slope	SA	45 degrees
Slope Orientation	All	
Location	Indoor/Dry	

Other Information

Warranty	See Website
----------	-------------

Project Notes

Name:

Location:

Quantity:

Finish Color:

Glass Color:

Notes: