



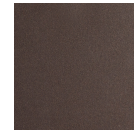
## Rock Crystal Round Chain 12pc Swag Multi-Pendant

Capturing the raw beauty of natural quartz, this versatile chandelier style enables customization of the placement and height of each pendant. Each 'Rock Crystal' is individually crafted by Hammerton artisans and illuminated with integrated LED light, eliminating the distraction of a filament bulb. Choose from several glass colors, chain styles, and finishes.

### Finishes



Beige Silver  
(BS)



Flat Bronze  
(FB)



Gilded Brass  
(GB)

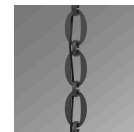


Matte Black  
(MB)

### Suspension



Diamond  
Chain (CH1)



Oval Chain  
(CH2)



Rectangular  
Chain (CH3)

### Glass Options



Amber (CA)



Bronze (CB)



Clear (CC)



Smoke (CS)

### Product Notes - PLEASE READ:

- All Hammerton Studio fixtures are handcrafted by artisans. Subtle imperfections reflect the mark of the maker and should be expected.
- This product may incorporate both steel and aluminum material. Transparent finishes may vary between steel and aluminum components.
- Products incorporating artisan blown and cast glass may create dramatic patterns of light and shadow on surrounding surfaces. While this is often desirable, shadowing can be minimized by adding recessed ceiling light to the installation area.

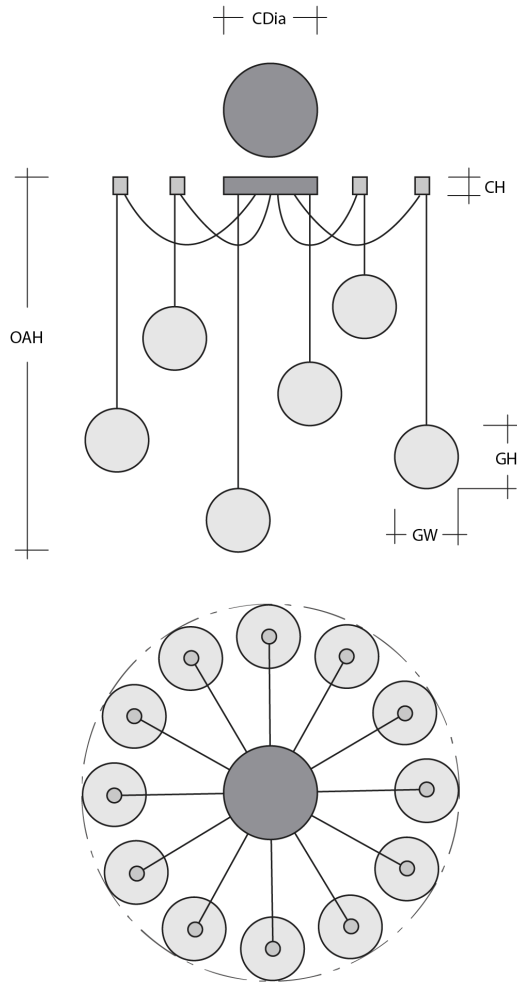
### General Notes:

- Visit [studio.hammerton.com](http://studio.hammerton.com) to read our complete warranty.
- All dimensions are in inches unless otherwise noted. Dimensions may vary up to 7/8".

Revision date: 2025-10-14

Scan for Product &  
[Install Info](#)





## Rock Crystal Round Chain 12pc Swag Multi-Pendant

### Product Dimensions *Dimensions may vary up to 7/8"*

|                 |  |              |
|-----------------|--|--------------|
| Overall Height  | OAH  | 23.3 – 60 in |
| Canopy Height   | CH   | 2.1 in       |
| Canopy Diameter | CDia   | 9 in         |
| Notes           | Individual pendant length adjustable from 23.3" to 60", dependent on installation. |              |

### Glass Dimensions

|                     |    |         |
|---------------------|----|---------|
| Large Qty           |    | 4       |
| Large Glass Height  | GH | 13.9 in |
| Large Glass Width   | GW | 4.3 in  |
| Medium Qty          |    | 4       |
| Medium Glass Height | GH | 12.1 in |
| Medium Glass Width  | GW | 4.1 in  |
| Small Qty           |    | 4       |
| Small Glass Height  | GH | 10.7 in |
| Small Glass Width   | GW | 3.9 in  |

### Electrical

|                            |                |
|----------------------------|----------------|
| Bulb/Lamping Qty           | 12             |
| Bulb/Lamping Type          | LED            |
| Wattage                    | 63 watts       |
| Voltage                    | 120 volts      |
| Total Source Lumens        | 5043 lumens    |
| Dimming Type               | TRIAC/ELV      |
| Correlated Color Temp: CCT | 2700K or 3000K |
| Color Rendering Index: CRI | 93+            |
| Certification              | ETL            |

### Installation & Mounting

|                    |                   |
|--------------------|-------------------|
| Weight: Lbs        | 36 lbs            |
| Mounting Type      | J-Box             |
| Minimum J-Box size | 4L X 4W X 1.5D in |
| Suspension Type    | Chain             |
| Flat or Sloped     | Sloped            |
| Max Slope          | SA 45 degrees     |
| Slope Orientation  | All               |
| Location           | Indoor/Dry        |

### Other Information

|          |             |
|----------|-------------|
| Warranty | See Website |
|----------|-------------|

### Project Notes

Name:

Location:

Quantity:

Finish Color:

Glass Color:

Notes: