



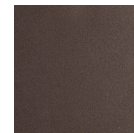
Nova Round 12pc Swag Multi-Pendant Chain (LED)

Featuring a softly undulant 10"W oval shade in artisan blown crystal glass that encloses an LED-illuminated cast crystal glass diffuser, this versatile chandelier style enables customization of the placement and height of each pendant. Choose from several glass colors and chain and diffuser styles. For a more traditional look, order with an E26 base that takes one 40W bulb.

Finishes



Beige Silver
(BS)



Flat Bronze
(FB)



Gilded Brass
(GB)



Matte Black
(MB)

Suspension



Diamond
Chain (CH1)



Oval Chain
(CH2)

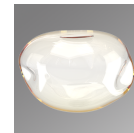


Rectangular
Chain (CH3)

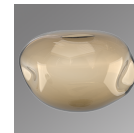
Glass Options



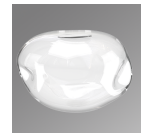
Smoke
(FS,GS,ZS)



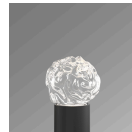
Amber
(FA,GA,ZA)



Bronze
(FB,GB,ZB)



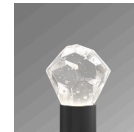
Clear
(FC,GC,ZC)



Floret
(FS,FA,FB,FC)



Geo
(GA,GB,GC,GS)



Zircon
(ZA,ZB,ZC,ZS)

Product Notes - PLEASE READ:

- All Hammerton Studio fixtures are handcrafted by artisans. Subtle imperfections reflect the mark of the maker and should be expected.
- This product may incorporate both steel and aluminum material. Transparent finishes may vary between steel and aluminum components.
- Products incorporating artisan blown and cast glass may create dramatic patterns of light and shadow on surrounding surfaces. While this is often desirable, shadowing can be minimized by adding recessed ceiling light to the installation area.

General Notes:

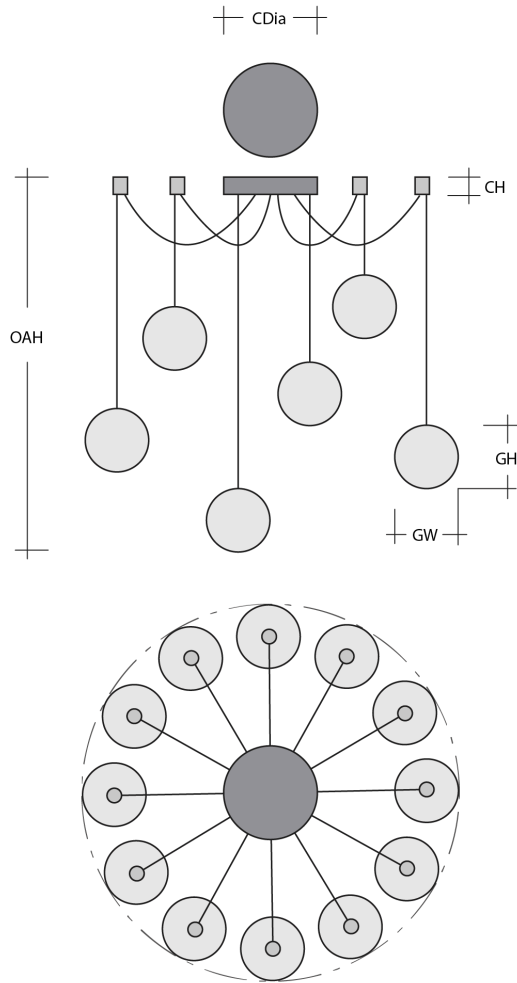
- Visit studio.hammerton.com to read our complete warranty.
- All dimensions are in inches unless otherwise noted. Dimensions may vary up to 7/8".

Revision date: 2025-10-14

Scan for Product &
Install Info



Nova Round 12pc Swag Multi-Pendant Chain (LED)



Product Dimensions *Dimensions may vary up to 7/8"*

| | | |
|-----------------|------|--|
| Overall Height | OAH | 17.8 – 60 in |
| Canopy Height | CH | 2.1 in |
| Canopy Diameter | CDia | 9 in |
| Notes | | Individual pendant length adjustable from 17.8" to 60", dependent on installation. |

Glass Dimensions

| | | |
|-------------------|----|--------|
| Nova Qty | | 12 |
| Nova Glass Height | GH | 7.4 in |
| Nova Glass Width | GW | 10 in |

Electrical

| | | |
|----------------------------|--|----------------|
| Bulb/Lamping Qty | | 12 |
| Bulb/Lamping Type | | LED |
| Wattage | | 63 watts |
| Voltage | | 120 volts |
| Total Source Lumens | | 5043 lumens |
| Dimming Type | | TRIAC/ELV |
| Correlated Color Temp: CCT | | 2700K or 3000K |
| Color Rendering Index: CRI | | 93+ |
| Certification | | ETL |

Installation & Mounting

| | | |
|--------------------|----|-------------------|
| Weight: Lbs | | 64 lbs |
| Mounting Type | | J-Box |
| Minimum J-Box size | | 4L X 4W X 1.5D in |
| Suspension Type | | Chain |
| Flat or Sloped | | Sloped |
| Max Slope | SA | 45 degrees |
| Slope Orientation | | All |
| Location | | Indoor/Dry |

Other Information

| | | |
|----------|--|-------------|
| Warranty | | See Website |
|----------|--|-------------|

Project Notes

Name:

Location:

Quantity:

Finish Color:

Glass Color:

Notes: