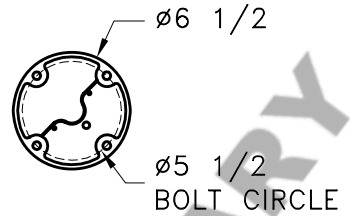


# HAMMERTON

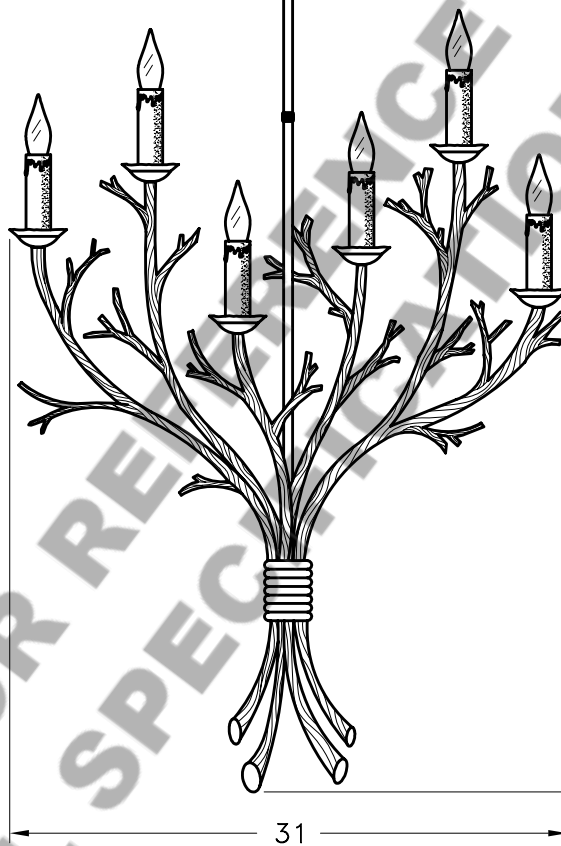


MOUNTING DETAIL

STANDARD FLAT  
MOUNT CANOPY

72" OF 1/4" CHAIN

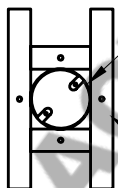
STANDARD FINISH



50

31

**MOUNTING SPECIFICATION NOTES:**



UL APPROVED  
J-BOX

BUILDING  
STRUCTURE

**CAUTION**

HARDWARE PACKET "A" MOUNTS  
DIRECTLY TO BUILDING STRUCTURE.

**ELECTRICAL SPECIFICATION NOTES:**



**ELECTRICAL: 8 – 40 WATT MAX  
EDISON BASE  
120v TYPICAL**

Light Bulb NOT Included

CATALOG # CH7162-BC

APPROXIMATE WEIGHT: 85 Lbs.

HARDWARE PACKET: A

SHADE MATERIAL : N/A

UL RATING: DRY

DIMENSION TOLERANCE  $\pm 7/8"$ .

[www.hammerton.com](http://www.hammerton.com)

© Copyright 2006, All rights in design, detail or invention of this drawing are reserved as the property of Hammerton. Any imitation or adaptation without written consent is strictly prohibited.