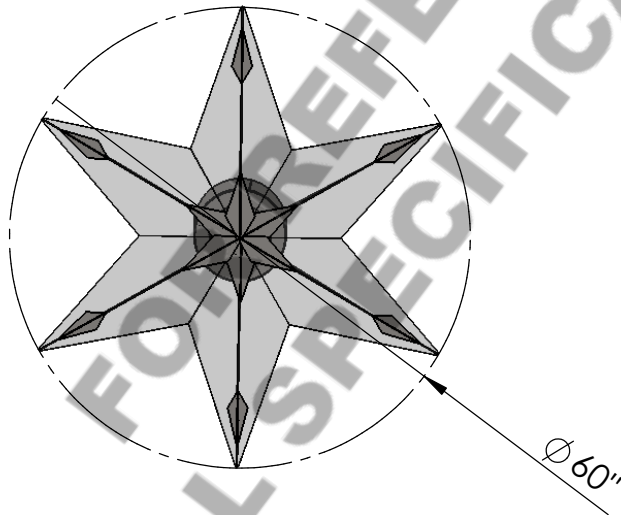
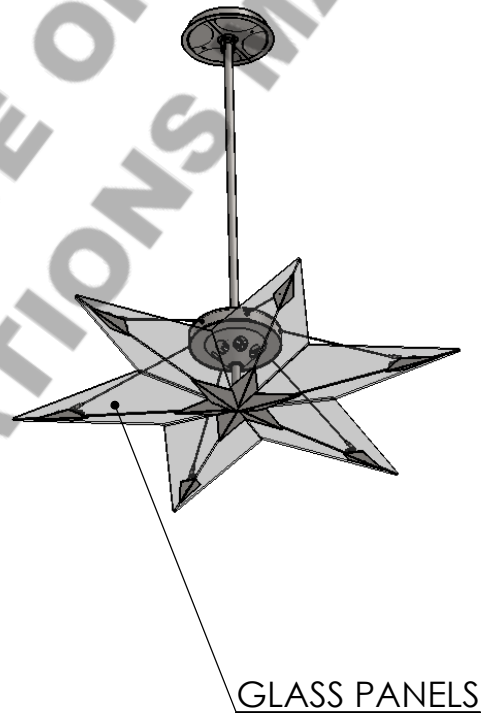
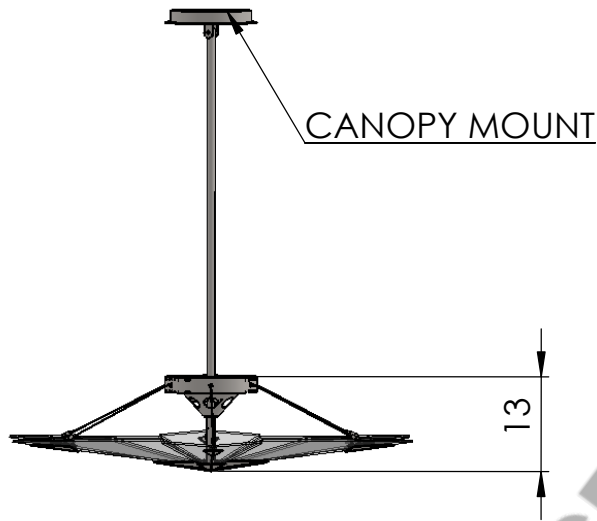


HAMMERTON

SPECIFICATION DRAWING

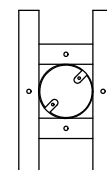
Location:

Product #: CHA2025



Mounting Style:A	Electrical Type: INCANDESCENT
Approximate lbs.: 100	Bulb Qty:6 Wattage: 50
Finish: FLAT BRONZE	Voltage:120
Top Diffuser: N/A	Socket Type:GU10
Bottom Diffuser: SAME AS LENS	UL Location: DRY

Mounting Detail



UL APPROVED
J-BOX

BUILDING
STRUCTURE

CAUTION

HARDWARE PACKET "A"
MOUNTS DIRECTLY TO BUILDING
STRUCTURE.

All fixtures created by Hammerton are handcrafted by artisans. Dimensions may vary up to $\frac{7}{8}$ ".

© Copyright 2013. All rights in design, detail or invention of this drawing are reserved as the property of Hammerton. Any imitation or adaptation without written consent is strictly prohibited.

Hammerton Inc., 217 Wright Brothers Dr. Salt Lake City, UT 84116 (801) 973-8095