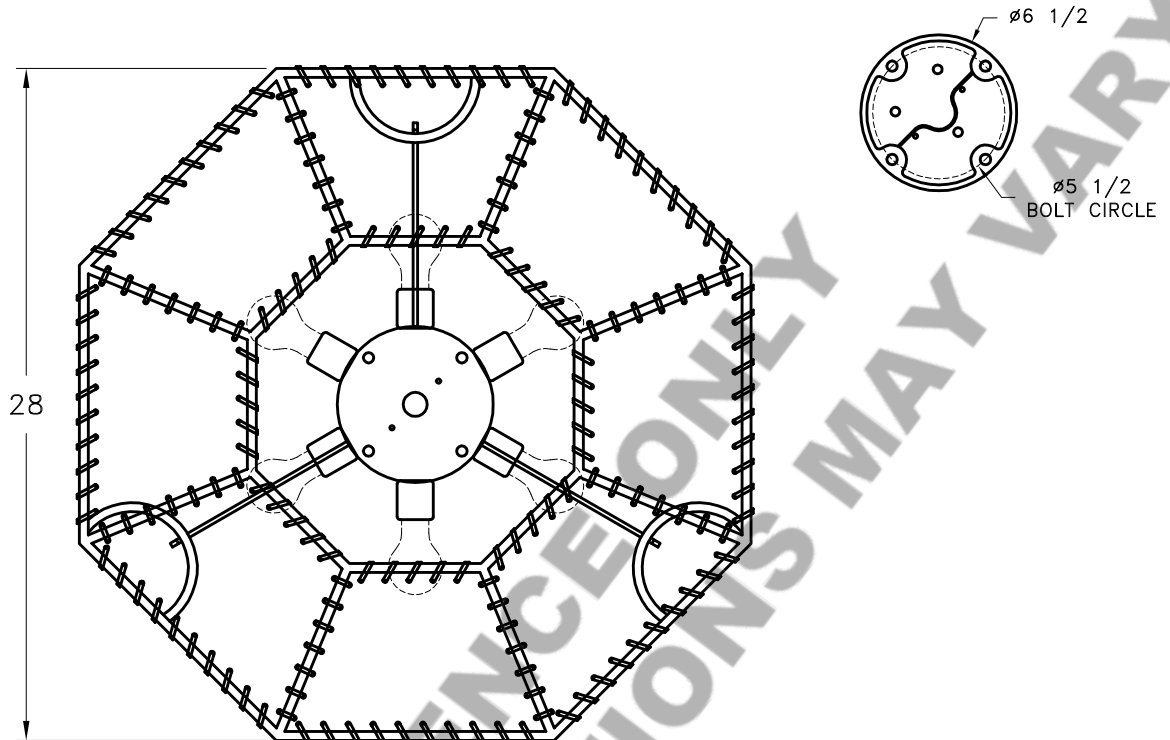
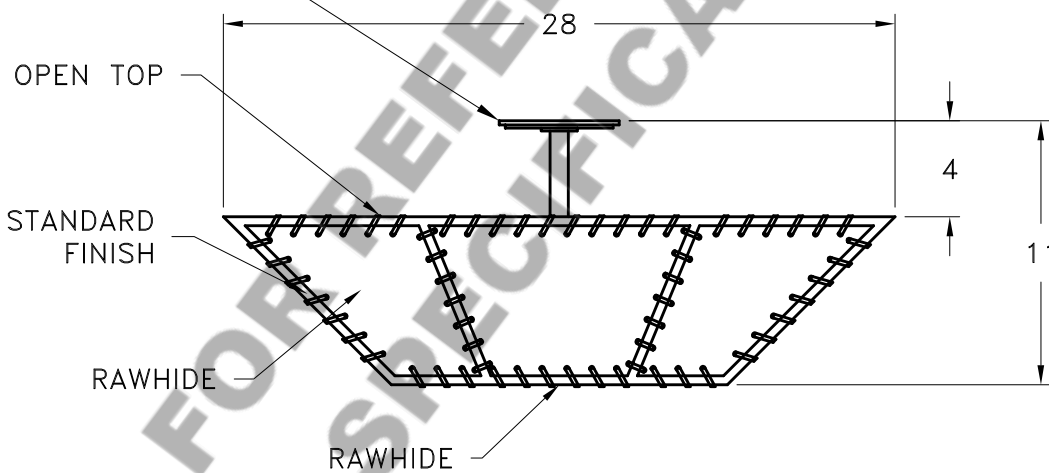


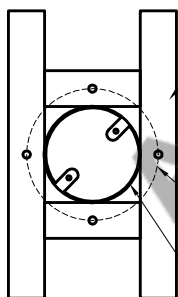
# HAMMERTON



STANDARD FLAT CANOPY



**MOUNTING SPECIFICATION NOTES:**

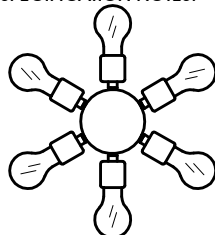


REQUIRED BLOCKING TO SUPPORT WEIGHT OF FIXTURE. FIXTURE MUST BE ATTACHED TO BUILDING STRUCTURE

Ø5 1/2" BOLT CIRCLE

4" STANDARD J-BOX. MOUNTING HOLES ARE AT 2 3/4" ON CENTER

**ELECTRICAL SPECIFICATION NOTES:**



**ELECTRICAL: 6-75 WATT MAX  
EDISON BASE  
120v TYPICAL**

Light Bulb NOT Included

CATALOG # CL5042

APPROXIMATE WEIGHT: 55 Lbs.

HARDWARE PACKET: A

SHADE MATERIAL : RAWHIDE

UL RATING: DRY

DIMENSION TOLERANCE ±7/8".

[www.hammerton.com](http://www.hammerton.com)

© Copyright 2006, All rights in design, detail or invention of this drawing are reserved as the property of Hammerton. Any imitation or adaptation without written consent is strictly prohibited.