



Aster Linear 7pc Multi-Pendant

The Nebula Aster Linear Pendant Chandelier features softly undulant 10"D round shades in artisan blown crystal glass with an LED-illuminated cast crystal glass diffuser in a choice of three styles. For a more traditional look, order with an E26 base that takes one 40W bulb.

Finishes



Beige Silver
(BS)



Flat Bronze
(FB)



Gilded Brass
(GB)



Matte Black
(MB)



Burnished
Bronze (BB)



Classic
Silver (CS)

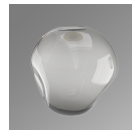


Graphite
(GP)



Novel Brass
(NB)

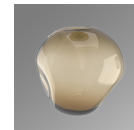
Glass Colors



Smoke
(FS,GS,ZS)



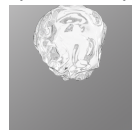
Amber
(FA,GA,ZA)



Bronze
(FB,GB,ZB)



Clear
(FC,GC,ZC)



Floret
(FS,FA,FB,FC)



Geo
(GA,GB,GC,GS)



Zircon
(ZA,ZB,ZC,ZS)

Product Notes - PLEASE READ:

- All Hammerton Studio fixtures are handcrafted by artisans. Subtle imperfections reflect the mark of the maker and should be expected.
- This product may incorporate both steel and aluminum material. Transparent finishes may vary between steel and aluminum components.
- Products incorporating artisan blown and cast glass may create dramatic patterns of light and shadow on surrounding surfaces. While this is often desirable, shadowing can be minimized by adding recessed ceiling light to the installation area.

General Notes:

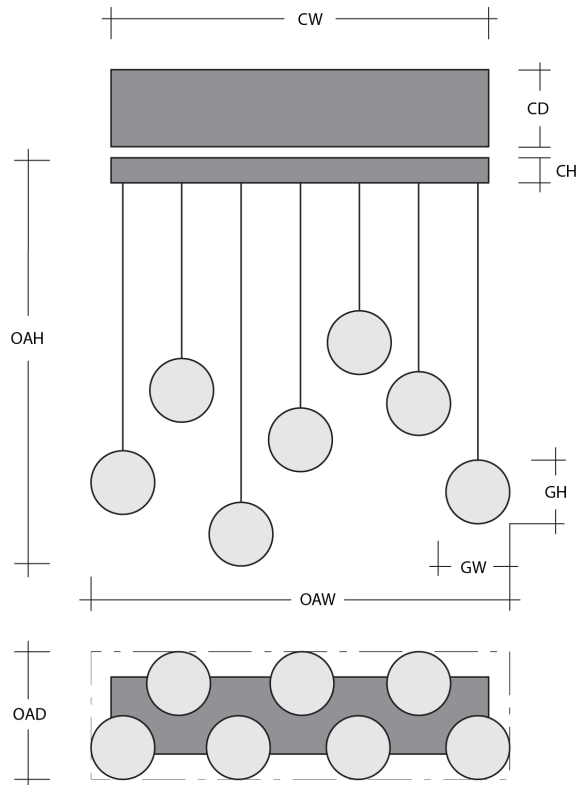
- Visit studio.hammerton.com to read our complete warranty.
- All dimensions are in inches unless otherwise noted. Dimensions may vary up to 7/8".

Revision date: 2025-02-03

[Scan for Product & Install Info](#)



Aster Linear 7pc Multi-Pendant



Product Dimensions *Dimensions may vary up to 7/8"*

Overall Height	OAH	17.8 – 135.8 in
Overall Width	OAW	50.2 in
Overall Depth	OAD	16.2 in
Canopy Height	CH	1.7 in
Canopy Width	CW	42.4 in
Canopy Depth	CD	8.4 in

Glass Dimensions

Large Qty		7
Large Glass Height	GH	9.8 in
Large Glass Width	GW	9.7 in

Electrical

Bulb/Lamping Qty		7
Bulb/Lamping Type		LED
Wattage		37 watts
Voltage		120 volts
Total Source Lumens		2942 lumens
Dimming Type		TRIAC/ELV
Correlated Color Temp: CCT		2700K or 3000K
Color Rendering Index: CRI		93+
Certification		ETL

Installation & Mounting

Weight: Lbs		81 lbs
Mounting Type		Structural
Suspension Type		Cloth Cord
Flat or Sloped		Sloped
Max Slope	SA	45 degrees
Slope Orientation		All
Location		Indoor/Dry

Other Information

Warranty		See Website
----------	--	-------------

Project Notes

Name:

Location:

Quantity:

Finish Color:

Glass Color:

Notes: